

Community Engagement Program for the
Development for the Urban Park and Cultural Centre for Burwood

Report on Engagement Findings:

***‘Have Your Say’ on
the Proposed Urban
Park and Cultural
Centre for Burwood***



Prepared by:
Community Life, March 2021



Burwood
Inc.1874

Contents

Executive Summary	3
Introduction	6
Findings from Community Consultation Stalls.....	9
Findings from Community Consultation Workshops.....	13
Findings from the Online Community Survey.....	18
Appendix A - Community Consultation Workshop Presentation	26
Appendix B - Community Survey Instrument	36

Executive Summary

From 30 November 2020 to 28 February 2021, Council worked closely with the local community to provide a range of opportunities for community feedback on the concept plans for the new Urban Park and Cultural Centre at the corner of Conder Street and Railway Parade, Burwood. As part of the community engagement program, Council also sought community input in relation to the potential operations of the site, including the types of programs, activities and services that will be required in order to meet the Burwood community's needs and priorities into the future.

The information in this report is based upon an analysis of the results of the community engagement program, which comprised of a series of community consultation stalls, community consultation workshops, an online community survey and direct engagement with identified key stakeholders. Approximately 180 community members or stakeholders participated in the community engagement program.

The concept plans along with key information on the proposed Urban Park and Cultural Centre project were made publicly available on the Council website for the duration of the community engagement program. Council also undertook a series of promotional activities to ensure the local community was well informed of the project and how to have their say.

The first part of this report presents key findings from the seven (7) Community Consultation Stalls delivered by Council at various dates, times and locations throughout the Burwood Local Government Area (LGA) from December 2020 to February 2021.

Key findings from the Community Consultation Stalls indicate:

- The most important outdoor spaces or features noted by participants included the 'open space/green lawn area' (26% or 22 mentions), the 'water play feature' (20% or 17 mentions) and 'high canopy tree planting' (16% or 14 mentions).
- The most important indoor spaces noted by participants included the 'café/community lounge' (26% or 22 mentions), the 'theatrette' (22% or 19 mentions) and the 'large multipurpose community hall' (20% or 17 mentions).
- A total of 39 suggestions for additional improvements were provided by participants, which broadly highlighted the importance of 'tree cover and shade,' 'parking, traffic and pedestrian considerations and impacts,' 'accessibility, including affordability,' and 'more play elements and services for children and families.'

The following section of the report presents key findings from the two (2) Community Consultation Workshops targeting residents, community organisations and groups, hirers and schools held at the Burwood Library and Community Hub at 2 Conder Street, Burwood in February 2021.

Key findings from the Community Consultation Workshops indicate:

- The most important outdoor spaces or features noted by participants included the 'open space/green lawn area' (26% or 6 participants), 'high canopy tree planting' (17% or 4 participants) and 'open park access and increased lighting' (17% or 4 participants).
- The most important indoor spaces noted by participants included the 'theatrette' (30% or 7 participants), 'café/community lounge' (22% or 5 participants) and the 'large multipurpose community hall' (22% or 5 participants).
- 'Multipurpose/flexible design that supports a broad range of community activity,' 'high canopy trees/natural shade cover,' and the 'theatre space, which meets a local and broader regional demand,' were what participants liked most about the concept plans. 'Better integration of outdoor/indoor spaces' and 'additional play features for children' were the most frequently mentioned aspects of the concept design that participants wanted to see added or improved in the detailed design phase.
- 'Creative arts and cultural programs' and 'community events, celebrations and public ceremonies' were the most popular types of activities that participants noted they would like to see delivered from the new Urban Park and Cultural Centre.
- 'Accessibility features and design to promote inclusion for people with disabilities,' 'sufficient onsite parking' and 'free or low cost fees and charges for facility hire' were the most frequent suggestions received for ensuring that the new Urban Park and Cultural Centre is open, welcoming and accessible to the whole the community.

The final section of the report presents key findings from the Online Community Survey, which was available on the Council website from 30 November 2020 to 28 February 2021.

Key findings of the Online Community Survey indicate:

- The most important outdoor spaces or features noted by survey respondents included the 'plaza with seating, shade and rest areas' (22% or 10 respondents), 'high canopy tree planting' (16% or 7 respondents) and the 'water play feature' (13% or 6 respondents).
- The most important indoor spaces noted by survey respondents included the 'café/community lounge' (27% or 12 respondents) and the 'large multipurpose community hall' (22% or 10 respondents).
- 'Community events and celebrations,' 'creative arts and cultural programs,' 'sports and recreational programs' and 'theatre based programs' were the most popular types of activities that survey respondents noted they would like to see delivered from the new Urban Park and Cultural Centre.
- 'Multipurpose design/clever use of space/inclusive spaces to bring community members together,' 'green spaces, trees and landscaping,' and 'outdoor space for children to play, including the water play feature' were what survey respondents liked most about the concept plans. 'More green space and less cement/paved areas,' 'adequate parking/more parking spaces,' and 'additional play features for children' were the most frequently mentioned as aspects that survey respondents would like to see added or improved in the detailed design phase.
- 'Public art, including heritage and interactive elements,' followed by 'free Wi-Fi' and 'more green space, including soft landscaping,' were the most frequently mentioned facilities or design features survey respondents would like to see incorporated into the Urban Park and Cultural Centre.

- Once completed, ensuring the Urban Park and Cultural Centre remains open and accessible to all members of the community and operates 7 days per week over extended operating hours was frequently mentioned by survey respondents. Many also highlighted the importance of the Urban Park and Cultural Centre remaining under Council management/operation with free or low cost spaces and activities open to all.
- The majority of survey respondents (85%) either 'strongly support' (25 or 56% of respondents), 'support' (10 or 22% of respondents) or 'somewhat support' (3 or 7% of respondents) the proposed Urban Park and Cultural Centre project. Only one respondent noted that they 'neither support nor do not support' the project, whilst six respondents (13%) noted that they did not support the project.

Overall, the majority of community feedback was supportive of the proposed Urban Park and Cultural Centre with many community members highlighting the need for additional open green space and excited by the project's potential to meet the diverse needs of Burwood's growing population.

The findings of the community engagement program will be utilised by Council to inform the development of detailed designs and further planning in relation to the future operations, programming and service provision at the site.

Burwood Council would like to thank all members of the community who participated in the community engagement program and provided valuable input into the development of the Urban Park and Cultural Centre.

Introduction

Burwood Council is committed to the ongoing development of best practice community facilities and public open space. The *Burwood Community Facilities and Open Space Strategy* (October 2019) supports Council to plan for the provision and management of best practice community facilities and public open space to address the needs of the current and future population of the Burwood Local Government Area (LGA) to 2036.

The Strategy identifies that by 2036; the Burwood LGA will need (based on population projections and benchmarks):

- An additional 1,875m² of community centre floor space to meet a benchmark of 80m² per person.
- A cultural/performance space to address a lack of arts and cultural facilities (in the Burwood LGA) and also regionally in the adjoining Canada Bay and Strathfield LGAs.
- New parks for local uses in very high density areas, including the suburb of Burwood.

Furthermore, the Strategy identifies the need for:

- Future facilities to be multi-purpose wherever possible with opportunities to deliver a broad range of community, recreational and cultural uses in the same space.
- New and enhanced open space to be accessible, universally designed and responsive to local needs and interests.
- Further to the multi-purpose principle, ensuring that facilities are fit for their primary purpose is also critical.
- Additional multipurpose spaces that can be configured into a larger space that can accommodate indoor recreation uses, such as dance, fitness and exercise, tai chi, badminton, table tennis as well as broader community and cultural uses such as community meetings, social group gatherings, cultural activities, conferences, civic or private functions.

In 2020, these identified needs were used to guide the development of concept plans for the new Urban Park and Cultural Centre at the corner of Conder Street and Railway Parade, Burwood on the current Council carpark site in front of the Burwood Library. Key components of the project include:

- A new urban park including a public plaza, water play features, sloping green lawn area with high-canopy tree plantings, landscaping and public art.
- A new multipurpose community and cultural centre, featuring spaces to support a broad range of community, cultural and recreational activities, including performance and rehearsal spaces.
- Underground car parking.

At the Ordinary Meeting of Council held on 24 November 2020, Council resolved to adopt the concept plans, internal layouts and landscape designs for the new Urban Park and Cultural Centre at Conder Street, Burwood and undertake a community engagement program to inform the detailed designs and operations of the proposed Urban Park and Cultural Centre.

From 30 November 2020 to 28 February 2021, Council implemented an extensive community engagement program to inform the further development of the Urban Park and Cultural Centre project. This report details the process and outcomes of the community engagement program. Key findings will be utilised by Council to inform the development of detailed designs as well as planning for future operations, programming and service provision at the site.

Overview of Community Engagement Program Activities

From 30 November 2020 to 28 February 2021, Council undertook the following engagement activities to inform the development of the new Urban Park and Cultural Centre:

Method	Description and Participation
Community Consultation Stalls	<p>Seven (7) face to face community consultation stalls were delivered at the following times and locations:</p> <ul style="list-style-type: none"> • Wednesday 9 December 2020, 2pm - 4pm at Burwood Library and Community Hub, Burwood. • Sunday 13 December 2020, 12pm - 2pm at Burwood Library and Community Hub, Burwood. • Friday 18 December 2020, 12pm - 2pm at The Strand, Croydon. • Tuesday 22 December 2020, 9am - 11am at Henley Park, Enfield. • Tuesday 26 January 2020, 5pm - 7pm at Council's Australia Day Event, Wangal Park, Croydon. • Wednesday 10 February 2021, 5pm - 6pm at Henley Park, Enfield. • Thursday 18 February 2021, 4pm – 5pm at Burwood Park, Burwood. <p>A total of 86 community members were engaged.</p>
Community Consultation Workshops	<p>Two (2) community workshops targeting community organisations, residents, hirers, schools and community groups were delivered at the Burwood Library and Community Hub at 2 Conder Street, Burwood on:</p> <ul style="list-style-type: none"> • Tuesday 9 February 2020, 4pm – 5.30pm; and • Thursday 11 February 2020, 10am – 11.30am. <p>A total of 23 community members were engaged.</p>
Online Community Survey	A total of 45 community members completed the online community survey.
Key Stakeholder Meetings or Presentations	A number of key stakeholder meetings or presentations were also held during the period, including Council Committees and Advisory Groups, Burwood Public School, Schools Infrastructure NSW and local business networks. Approximately 25-30 community members were engaged via targeted presentations or key stakeholder meetings over the period.

A series of promotional activities were also conducted by Council to ensure that the local community was well informed of Council's proposal and how to have their say. Promotional activities are summarised in the following table.

Activity	Description and Reach
Burwood Council Webpage	Dedicated webpage specific to the project, including project concept plans and an online community survey. 1,230 page views from 30 November 2020 to 28 February 2021.
Social Media	8 Council Facebook posts with a total reach of 3,511 people. 14 Mayor Facebook posts with a total reach of 8,527 people. 6 Instagram posts with a total reach of 2,352 people. 5 WeChat posts with a total reach of 902 people. One Mayoral Video about the project with a total of 906 views.
Letter from the Mayor and Project Brochure	A direct letter from the Mayor with project brochure to all households (17,000 households) in the Burwood LGA inviting participation in the community engagement program.
Council e-News	Inclusion of project information and access to online survey via Burwood Library e-news (10,228 subscribers) and Burwood Council e-news (15,241 subscribers).
Additional Email Communications	Email communications to: <ul style="list-style-type: none"> Community groups and organisations operating in the Burwood LGA - 45 recipients. Existing facility hirers of Council community facilities - 308 recipients. Enfield Aquatic Centre customer database - 250+ email recipients. Council committees and various e-networks, including Burwood Multicultural Advisory Committee, ANTAR, Youth Alliance, Burwood Youth Advisory Group, Burwood Business Chamber, Community Grants Database and Inner West Child and Family Network - 150+ email recipients.

Acknowledgements and Notes

Burwood Council would like to thank all members of the community who participated in the community engagement program. Council values your input and ideas for the development of the Urban Park and Cultural Centre for Burwood.

Please note that Burwood Council staff developed and administered community engagement program activities. Council staff also undertook analysis of participant responses and wrote the resultant report.



Findings from Community Consultation Stalls

Council delivered seven (7) face to face Community Consultation Stalls open to all members of the community at the following times and locations:

- Wednesday 9 December 2020, 2pm - 4pm at Burwood Library and Community Hub, Burwood.
- Sunday 13 December 2020, 12pm - 2pm at Burwood Library and Community Hub, Burwood.
- Friday 18 December 2020, 12pm - 2pm at The Strand, Croydon.
- Tuesday 22 December 2020, 9am - 11am at Henley Park, Enfield.
- Tuesday 26 January 2021, 4pm - 5pm at Council's Australia Day Event, Wangal Park, Croydon.
- Wednesday 10 February 2021, 5pm - 6pm at Henley Park, Enfield.
- Thursday 18 February 2021, 4pm - 5pm at Burwood Park, Burwood.

A total of 86 community members participated in the Community Consultation Stalls.

All Community Consultation Stalls were staffed by Council officers, who used five story boards to explain the concept plans for the Urban Park and Cultural Centre and obtain participant input on three key questions, which included:

- In relation to the Urban Park, what do you think is the most important outdoor space or feature for the local community?
- In relation to the Cultural Centre, what do you think is the most important indoor space for the local Community?
- What else would you like Council to improve or consider as part of the project?



Participants were also provided with information on how to provide further feedback via the Council Website or invited to attend a more in-depth Community Consultation Workshop. The information provided herein presents a summary of the findings from the Community Consultation Stalls.

Presentation of Data

In relation to the Urban Park, what do you think is the most important outdoor space or feature for the local community?

Feature	No. of Mentions
Open Spaces, including Green Lawn Area	22
Water Play Feature	17
High Canopy Tree Planting	14
Landscaping including shrubs, grasses and flowers	10
Open Park Access and Increased Lighting	8
Plaza with Seating, Shade and Rest Areas	8
Public Art	2
Other: <ul style="list-style-type: none">• Dedicated outdoor space to brainstorm with community• BBQ, picnic areas and bins• Accessible playground equipment• Accessible public toilets in park• Exhibition Space	5
TOTAL	86

In relation to the Cultural Centre, what do you think is the most important indoor space for the local Community?

Indoor Space	No. of Mentions
Café/Community Lounge	22
Theatrette	19
Large Multipurpose Community Hall (500 capacity)	17
Flexible Studio Space	14
Medium Sized Multipurpose Rooms	8
Commercial Kitchen	4
Other: <ul style="list-style-type: none">• Council run childcare• Table tennis	2
TOTAL	86

What else would you like Council to improve or consider as part of the project?

A total of 39 suggestions for additional improvements were provided by participants, which broadly highlighted the importance of:

- Tree cover and shade
- Parking, traffic and pedestrian considerations and impacts
- Accessibility, including affordability
- More play elements and services for children and families

Specific comments provided by participants are outlined in the following table.

What else would you like Council to improve or consider as part of the project?

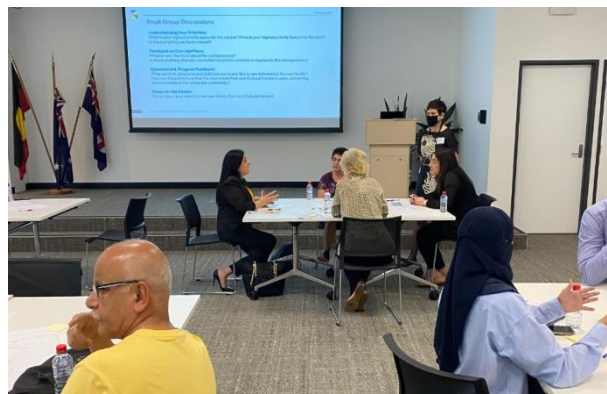
Improvements or Considerations (39 suggestions):
<i>"Integrate water play features throughout park."</i>
<i>"Do not remove existing trees and add more shade."</i>
<i>"Please allow for more than 2 hours of parking in the carpark."</i>
<i>"Park is not big enough to cater to existing and growing density."</i>
<i>"Widen streets where high rises are located."</i>
<i>"Bus lane shared with bikes and cars is too busy. Create safe bike lanes for kids to ride to school."</i>
<i>"Undertake Wind Study."</i>
<i>"Provide commuter car parking."</i>
<i>"We are losing Woolworths – we need something easy in/out for supermarket shopping."</i>
<i>"Opportunity to reflect best practice for accessible places and facilities."</i>
<i>"Childcare centre facilities."</i>
<i>"More rooms for small group activities."</i>
<i>"Accessible paths of travel throughout park and facility."</i>
<i>"Proposal to be tested by access consultants."</i>
<i>"Pedestrian and vehicle access to carpark are both critical considerations."</i>
<i>"Maintain crossing to Burwood Public School."</i>
<i>"Design needs to consider people with additional needs."</i>
<i>"Site should operate as an information point/community centre. It needs to be a staffed site acting as a central point for community information."</i>
<i>"More shaded seating areas."</i>
<i>"Occasional childcare services. "</i>
<i>"A bar."</i>
<i>"Accessible parking and as much shading as possible with trees."</i>
<i>"Programs and activities for seniors – i.e. gentle exercise, tai chi."</i>
<i>"Water play feature to include soft fall and shade coverage."</i>
<i>"Kids' theatre programs to operate out of theatre (e.g. Riverside Theatre)."</i>
<i>"Ensure facilities are free or very affordable for community use."</i>
<i>"Spaces for people to come together – seating with shade."</i>
<i>"Free bookable rooms."</i>
<i>"Improve visibility and provide additional shade."</i>
<i>"Must be able to make money and pay for its own running costs."</i>
<i>"Water feature can be expensive with its ongoing costs."</i>
<i>"Include a walking track."</i>
<i>"Consider redirecting vehicle traffic around and away from the area."</i>
<i>"Should consider adding another zebra crossing at Railway parade both for pedestrian use but also to help slow down traffic."</i>
<i>"Squash courts."</i>
<i>"Great concept as the area could do with a tidy up."</i>
<i>"It shouldn't be monopolised by any one community group."</i>
<i>"Should include more children's facilities and activities."</i>
<i>"The theatre itself should be larger."</i>



Findings from Community Consultation Workshops

Council delivered two (2) face to face Community Consultation Workshops open to all members of the community on Tuesday 9 February 2020 from 4pm – 5.30pm and Thursday 11 February 2020 from 10am – 11.30am at the Burwood Library and Community Hub. A total of 23 community members participated in the Community Consultation Workshops.

Community Consultation Workshops were staffed by Council officers who delivered a presentation on the background of the project, and facilitated and documented small group discussions. A copy of the Community Consultation Workshop Presentation is available in Appendix A. The information herein presents key findings from the Community Consultation Workshops.



Presentation of Data

What is your highest priority feature or space for the Urban Park?

Outdoor Space or Feature	No. of Respondents	% of Respondents
Open Spaces, including Green Lawn Area	6	26%
High Canopy Tree Planting	4	17%
Open Park Access and Increased Lighting	4	17%
Landscaping including shrubs, grasses and flowers	3	13%
Water Play Feature	2	9%
Public Art	2	9%
Plaza with Seating, Shade and Rest Areas	2	9%
TOTAL	23	100%

What is your highest priority space for the Cultural Centre?

Indoor Space	No. of Respondents	% of Respondents
Theatrette	7	30%
Café/Community Lounge	5	22%
Large Multipurpose Community Hall (500 capacity)	5	22%
Flexible Studio Space	3	13%

Indoor Space	No. of Respondents	% of Respondents
Medium Sized Multipurpose Rooms	2	9%
Commercial Kitchen	1	4%
TOTAL	23	100%

What do you like most about the concept plans?

Response	No. of Mentions*
Multipurpose/flexible design that supports a broad range of community activity	8
High canopy trees/natural shade cover	6
Theatre space, which meets a local and broader regional demand	5
Good utilisation of small space	4
Additional parking/moving car parking underground	4
Scale of the facility design and larger style spaces	3
Thoughtful lighting promoting safety and night time use	3
Creative design that considers visual impact	3
Open plan design that caters for Covid-19 requirements	2
Inclusion of landscaping throughout the park	2
Water Play Feature	2
Disability access	2
Central location, ability to attract workers and residents	2
Plans are appealing/attractive in terms of both aesthetic and community needs	2
Community café	1
Relationship between indoor and outdoor spaces	1
Opportunity to reflect Aboriginal history and culture in design elements	1
TOTAL	51

*Participants provided multiple answers.

Is there anything else you would like Council to consider or improve in the concept plans?

Response	No. of Mentions*
Better integration of outdoor/indoor spaces, particularly in relation to the café	8
Additional play features for children, including sensory and tactile play elements	7
Ensure there is adequate parking/more parking, including dedicated car share and electrical vehicle spaces	5
More green space and less cement/paved areas	4
More cafe/dining options, including a bar	4
Covered outdoor events space	3
More storage	3
Ensure service lift and carpark height are adequate in size for production props and equipment	3
Exercise equipment (indoor and outdoor)	3
Covered walkways that are accessible and weather proof	3
Infrastructure for outdoor events (lighting, ability to fence outdoor space, power outlets)	3
Additional trees	2
Affordable fees and charges for community groups	2
Adequate green room facilities (showers, separate change areas for male/female performers)	2

Response	No. of Mentions*
Loading zones and dock for event bump in	2
CCTV and lighting to improve safety	2
24 hour access to public toilets	2
Increase theatre size	2
Include a skate park	2
Spaces for pram parking	2
Natural fencing - garden beds and green walls	2
Acoustics and sound proofing for music and choir performances	2
Include a fenced dog park area	1
Include bee hives on roof	1
Access for emergency vehicles	1
Include an additional level for more community facilities	1
Reduce plaza size to increase indoor spaces	1
Flag poles for ceremonies	1
Creation of living walls	1
Hand washing and water bottle filling stations	1

*Participants provided multiple answers.

What services, programs and activities would you like to see delivered at the new facility?

Activities, Programs or Services	No of Mentions*
Creative arts and cultural programs (e.g. art exhibitions, music programs, artist and author talks, arts workshops, readings, poetry slams, storytelling, artist in residency program)	15
Community events, celebrations and public ceremonies	11
Theatre based programs (e.g. music performances and concerts)	10
Sports and recreational programs (e.g. dancing, fitness classes, yoga, table tennis)	6
Seniors activities (e.g. social groups, exercise classes, tai chi, dancing, singing)	5
Cooking programs and workshops	4
Markets	4
Street artists and performers	4
Vivid/light shows	3
One stop shop facilities and programs	3
Open air cinema/film screenings	3
Children and family based activities (e.g. after school programs and playgroups)	2
Low cost or free facility hire	2
A bar with live music	2
Stand-up comedy	2
Activities for workers in the CBD	2
Youth programs and activities	1
Free or low cost activities	1
Dog park facilities	1
Sculptures in the park exhibition	1
Karaoke room	1
Seeding funding for onsite community based activities	1
TOTAL	84

*Participants provided multiple answers.

How can Council ensure that the new Urban Park and Cultural Centre is open, welcoming and accessible to the whole the community?

Response	No. of Mentions*
Accessibility features and design to promote inclusion for people with disabilities (sensory features, wheelchair access, accessible signage, including Braille)	5
Sufficient onsite parking	5
Free or low cost fees and charges for facility hire	4
Security, CCTV and lighting	3
Priority access for local residents and community groups	3
Extended operating hours	2
Improved pedestrian access (from Burwood Train Station)	2
Welcoming and inclusive for people of all abilities, cultural backgrounds and language groups	2
Simple and easy booking process	2
Activation with public art and art exhibitions	2
Extensive promotion to a range of user groups	2
Propose restaurant as a destination/point of attraction	2
Maintain view of the Burwood Library	1
Water bubbles and bottle fillers	1
Planning with school and Council to minimise construction impact	1
TOTAL	37

*Participants provided multiple answers.

Tell us about your vision for the new Urban Park and Cultural Centre?

A broad range of vision statements and aspirations relating to the new Urban Park and Cultural Centre were expressed by workshop participants, including:

- *"The new heart of Burwood"*
- *"Revitalisation of community life."*
- *"Improving quality of community life, celebrating arts and cultural diversity at Burwood."*
- *"A place for multiculturalism and diversity."*
- *"A place to develop and educate the community about the Australian culture."*
- *"Green open space."*
- *"Community connectivity."*
- *"A place with activities to attract people to the area."*
- *"A breath of fresh air for Burwood."*
- *"Greening of Burwood."*
- *"Recreation, art, culture and play."*
- *"A place for bringing the community together – a sense of belonging and inclusion."*
- *"A community hub that radiates and engages with others and includes everyone."*
- *"A well-used and well maintained vibrant community space that is for everybody and connects residents to their community."*
- *"A welcoming facility for everyone - multicultural and multigenerational."*
- *"Well styled, beautiful, thoughtful, comprehensive and inspiring."*

- *“A place that allows for creativity, a long awaited investment for the future.”*
- *“Building bridges between youth, elderly and all cultures.”*
- *“The Burwood Wellness Space.”*
- *“A cultural and recreational hub, including spiritual and wellbeing programs.”*



Findings from the Online Community Survey

Council also undertook an Online Community Survey from 30 November 2020 to 28 February 2021 targeting the broader Burwood LGA community. A total of 45 surveys were completed using the Community Survey Instrument available in Appendix B. An additional written submission was also received and accepted via email due to difficulty experienced by the individual when completing the online survey. The information herein presents key findings from the online survey and comments received via email.

Presentation of Data

In relation to the proposed Urban Park, what do you think is the most important outdoor space or feature for the local community?

Outdoor Space or Feature	No. of Respondents	% of Respondents
Plaza with seating, shade and rest areas	10	22%
High Canopy Tree Planting	7	16%
Water Play Feature	6	13%
Public Art	4	9%
Landscaping including shrubs, grasses and flowers	3	7%
Open Space including green lawn area	3	7%
Open Park Access	1	2%
Other - Responses included: Parking (2), Community Garden (2), 'Sufficient grassed areas with large trees similar to Burwood Park' (1), 'Opportunities for commercial use - café with excellent food options' (1), 'Fenced small dog park and green space with canopy trees and seating outdoors' (1), 'Waste of money' (1), 'Public art is useless rubbish' (1), 'This is not large enough to be considered a park of any kind' (1), 'Are you seriously having all of this in a carpark?' (1).	11	24%
TOTAL	45	100%

In relation to the proposed Cultural Centre, what do you think is the most important type of indoor space for the local community?

Indoor Space	No. of Respondents	% of Respondents
Café/Community Lounge	12	27%
Large Multipurpose Community Hall (500 capacity)	10	22%
Medium Sized Multipurpose Rooms	7	16%
Flexible Studio Space	4	9%
Theatrette	3	7%
Commercial Kitchen	1	2%
Other - Responses included: A community centre(2), 'Somewhere nice for people to	8	18%

Indoor Space	No. of Respondents	% of Respondents
sit inside' (1), 'Indoor pool' (1), 'Waste of taxpayer money' (1), 'Community music, arts and cultural spaces indoors' (1), 'Badminton court / table tennis table / indoor game facility' (1), 'Burwood is too built up already with ugly high rise apartments, not enough space for cars, why build more?' (1).		
TOTAL	45	100%

What activities, programs or services would you like to see provided at the new Cultural Centre?

Activities, Programs or Services	No of Mentions*
Community events and celebrations	27
Creative arts and cultural programs (e.g. art exhibitions, music programs, artist talks, arts workshops)	25
Sports and recreational programs (e.g. dancing, fitness classes, yoga, table tennis)	24
Theatre based programs (e.g. performances and concerts)	23
Youth programs and activities (e.g. school holiday programs)	19
Wi-Fi access	19
Environmental and sustainability workshops	17
Children and family based activities (e.g. after school programs and playgroups)	16
Seniors activities (e.g. social groups)	16
Cooking and healthy eating programs	16
Activities for all abilities	15
Education and employment support (e.g. English classes, job seeker workshops)	15
Bookable spaces for hire	15
Council customer service point and information	3
Other – Responses included: Community Centre (2), 'Solar, battery, cycling, composting workshops' (1), 'Programs like the Inner West's Green Living Centre' (1), 'Outdoor dining' (1), 'Leave it as a carpark' (1), 'It's a waste of money as many people in Burwood won't come and will not be using it at any rate' (1), 'Free space and free activities' (1).	8
TOTAL	258

*Respondents provided multiple answers.

Of the above activities, programs or services what would you consider as the most important to you?

Responses	No. of Respondents	% of Respondents
Creative arts and cultural programs	8	18%
Environmental and sustainability workshops	6	13%
Community events and celebrations	5	11%
Theatre based programs (e.g. performances and music concerts)	5	11%
Children and family based activities (e.g. after school programs and playgroups)	4	9%

Responses	No. of Respondents	% of Respondents
Sports and recreational programs (e.g. dancing, fitness classes, yoga, table tennis)	3	7.5%
A multipurpose space that can cater to different people and activities	3	7.5%
Bookable spaces for hire	2	4%
Community centre/neighbourhood centre services	2	4%
Seniors activities (e.g. social groups)	1	2%
Wi-Fi access	1	2%
Other – Responses included: Parking (1), 'Waste of money' (1), 'Ongoing maintenance' (1), 'Low cost/ affordable' (1), 'Community plaza with multicultural cuisine food court' (1).	5	11%
TOTAL	45	100%

What do you like most about the concept plans for the Urban Park and Cultural Centre?

Response	No. of Mentions*
Multipurpose design/clever use of space/inclusive spaces to bring community members together	16
Green spaces, trees and landscaping	12
Outdoor space for children to play including water play feature	6
All elements proposed	6
Central location (close to Library, train station, public transport and CBD)	4
Community café	2
Nothing	2
TOTAL	48

*Respondents provided multiple answers.

Is there anything else you would like Council to consider or improve in the concept plans?

Response	No. of Mentions*
More green space and less cement/paved areas	8
Ensure there is adequate parking/more parking	7
Playground/additional play features for children, including water play elements	6
Additional trees	3
More bike racks and bicycle paths	3
No more high rise apartments	3
Do not remove existing trees	2
Include a public pool	2
Include a fenced dog park	2
Ensure only native plants are included in the park	2
Covered outdoor events space	2
Fencing around the park for child safety	2
More cafes/dining options	2
Storage for user groups	2
Free access for local residents	2
Co-working spaces	2

Response	No. of Mentions*
More open space with the Burwood Town Centre	2
Include a bar	2
Remove car parking	1
Outdoor spaces for cooking	1
Maintain as a public carpark	1
Include a bookshop	1
Larger stage, loading dock and green room	1
Facilities for pottery, painting and drawing	1
TOTAL	60

*Respondents provided multiple answers.

What equipment, facilities or design features would you like to see incorporated into the Cultural Centre and Urban Park?

Response	No. of Mentions*
Public art, including heritage and interactive elements	14
Free Wi-Fi	6
More green space, including soft landscaping	5
Environmental design features, including solar panels	5
Outdoor playground for children	4
Additional outdoor seating in shade	3
Cycling infrastructure (cycle lanes and bike parking)	3
Lighting features, including Christmas lights	2
Parking	2
Indoor sporting facilities and equipment	2
Screen on stage for film screenings/presentations	2
Good quality acoustics	2
CCTV	2
Fenced dog park area	2
Access to technology	2
Wall and rain gardens	2
No public art	1
Accessible paths of travel to Burwood Station	1
Light weight chairs and tables	1
Outdoor communal pizza oven	1
TOTAL	62

*Respondents provided multiple answers.

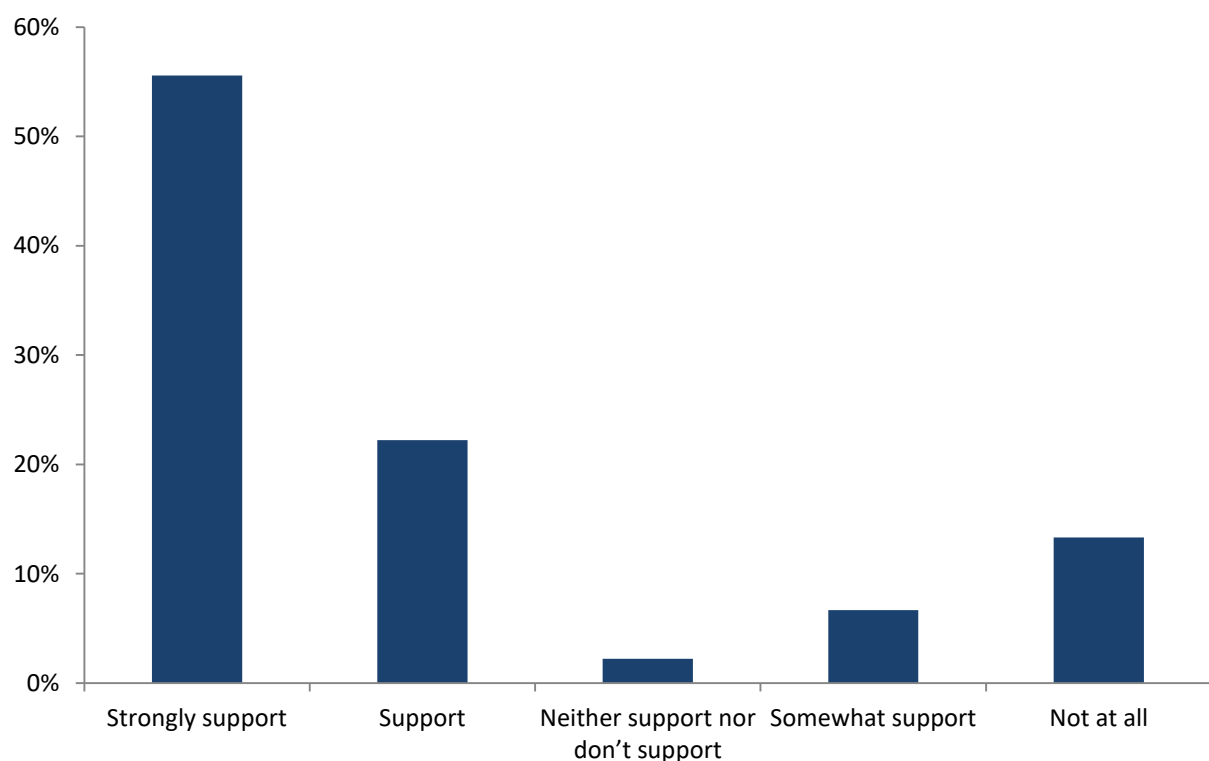
Once completed, how would you like to see the Urban Park and Cultural Centre operate?

Response	No. of Mentions*
Park should be open and accessible to all/Open to the public 24 hours per day, 7 days per week	9
Cultural Centre should be open 7 days per week until late/with extended operating hours	7
Council managed and operated for public benefit	5
Free or low cost activities	4
Welcoming and inclusive for people of all abilities, cultural backgrounds and language groups	4

Response	No. of Mentions*
Ongoing opportunities for community involvement in the management of the space	3
Priority access for local residents	3
Onsite staff/welcoming staff	2
An informal place for people to come together	2
Free parking	1
Operating on a 'break even' budget to ensure no cost to rate payers	1
TOTAL	41

*Respondents provided multiple answers.

How strongly do you support this project?



Do you have any additional comments or feedback?

The following additional comments and suggestions were provided, and include comments received via email.

Additional Comments
<i>"BCWS with its Community Centre/Neighbourhood Centre Family Support Services provide essential support to economically and socially disadvantaged members of the local community. It makes sense that Burwood Council does not recreate the wheel and allow BCWS the opportunity to continue its services in this beautiful complex building."</i>
<i>"Fenced doggy park. Burwood needs a pool."</i>
<i>"Finish one project, tear it down and replace it with another. Genius planning."</i>
<i>"Have relaxing classical music in low volume being played throughout the park."</i>

Additional Comments
<i>"I only support the project if it is primarily a park - the plan shows too much paved area and not enough grass and trees. The climate is getting hotter - concrete and paving increases the heat. This is an opportunity to create a cool space in Burwood, with grass and trees. The paved areas only need to be small - in the plan they are far too dominant. If it's going to be paved, better to just leave as a car park."</i>
<i>"If this is Burwood Council's only answer to open space and recreational needs for the area then it will be a disgraceful outcome. Give us a proper park."</i>
<i>"It is important that the new space is not overshadowed from 12midday to 3pm during mid-winter."</i>
<i>"It's good to see many outdoor sports facilities becoming available around Burwood and that attracts the community. It'd be nice to have something like that for indoor as well to make it non-weather sensitive."</i>
<i>"Love the idea!"</i>
<i>"Much more green space is needed."</i>
<i>"Please continue to invest in the community and expand the green space of Burwood - it has become more dense, we need a safe space to be able to go to without having to spend money."</i>
<i>"Please install more bike lanes."</i>
<i>"Rearrange traffic access to the venue."</i>
<i>"Thank you."</i>
<i>"The air quality around the proposed park is likely to be impacted by high volumes of traffic moving in, around and beneath the site. The concept plans do not appear to indicate where exhaust stacks will be located to ensure vehicle emissions are drawn away from the site and, more importantly, away from Burwood Public School which is located nearby."</i>
<i>"The concept plans do not provide a great deal of detail on the nature of trees and vegetation to be planted on the site. It will be critical that plants are selected for their ability to provide habitat for wildlife and to minimise the urban heat island effect in the area. High level canopy cover should be prioritised over concrete planter boxes with shallow-rooted plants scattered across the site."</i>
<i>"The concept plans show an increase in local parking facilities from around 55 above-ground spaces to 125 underground spaces at the site. The impacts on local traffic flows in the area do not appear to have been considered, and they are likely to be significant. This will be particularly true during school drop-off and pick-up times and whenever the 200 seat community theatre is being utilised."</i>
<i>"The concept plans show the proposed park to be more of a civic square than high quality green space that nearby residents and the neighbouring school community will be able to enjoy. As the adjacent area has recently been rezoned to allow new high-rise towers at around twice the scale of existing buildings, there will clearly be high demand for open space in the precinct. It is unlikely that the proposal will deliver what is required."</i>
<i>"The Open Space and Community Facilities Strategy identifies a need for a new park of around 2,000 metres squared near the train station in Burwood. It would be a poor outcome for our community if this new urban civic centre is offered as the only open space to be provided in the area in order to meet this need. New green space must be prioritised for Burwood to ensure our kids have somewhere to play, local workers can relax, and all of us can enjoy."</i>
<i>"The project will need a dynamic team to produce a truly contemporary and forward thinking space which engages people in a creative and thought provoking manner."</i>
<i>"There are many vulnerable people in our community and Burwood Council needs to maintain operations to meet their needs. It is important to have a community centre to care for families and their children and to make a difference to vulnerable people in our community. It improves the health and social outcomes of everyone especially the disadvantaged groups."</i>
<i>"Use maximum soft landscaping to shade paved areas and to beautify the space."</i>
<i>"Waste of public monies."</i>

Additional Comments
<i>"With all the extensive overdevelopment that is rapidly degrading the green spaces in Burwood, we MUST have green spaces for residents and encourage local wildlife to coexist."</i>
<i>"With two levels of underground car parking, an underground cultural centre and open space at ground level, Council seems to have too much proposed for the limited space on this site. These plans clearly prioritise a cultural centre over proper green space but the risk of delivering poor facilities all round is increased by attempting too ambitious a project. Yes, consideration must be given to the delivery of high quality green space here to complement the community centre, and as the town centre continues to expand Council must also work with nearby landowners and developers to provide a proper new park for Burwood."</i>
<i>"Worry about construction noise in early mornings and evenings. Also level of air quality and dust."</i>

Community Survey Participants

At total of 45 participants completed the survey from 30 November 2020 to 28 February 2021. Details of suburb of residence, gender, age, and language spoken at home follow.

Suburb of Residence

Suburb	No. of Respondents	% of Respondents
Burwood	25	55%
Croydon Park	6	14%
Croydon	5	11%
Enfield	1	2%
Strathfield	1	2%
No Response	1	2%
Other: Ashfield, Campsie, Sydney Olympic Park, Ultimo, Not specified (2).	6	14%
TOTAL	45	100%

Gender of Participants

Response	No. of Respondents	% of Respondents
Female	27	60%
Male	9	20%
Prefer not to say	7	16%
Not specified	2	4%
TOTAL	45	100%

Age of Participants

Age Group	No. of Respondents	% of Respondents
18-24	4	9%
25-34	10	22%
35-44	12	26%
45-54	4	9%
55-64	8	18%
65 - 74	5	11%

Age Group	No. of Respondents	% of Respondents
75+	1	2%
Not specified	1	2%
TOTAL	45	100%

Language/s Spoken at Home

Language/s*	No. of Respondents	% of Respondents
English	37	69%
Cantonese	4	7%
Mandarin	2	4%
Spanish	2	4%
Korean	1	2%
Not specified	1	2%
Other: German, Kurdish, Persian, Greek, Nepali, Turkish, Diojiu /Teochew.	7	13%
TOTAL	54	100%

*Respondents in some cases noted more than one language spoken at home.

Appendix A - Community Consultation Workshop Presentation





14 March 2021

Overview of the Community Forum

1. Welcome & Registration
2. Background & Overview of the Project
3. Group Discussions
[Feedback on Concept Plans, Operational & Program Feedback, Vision for the Site]
4. Report Back on Group Discussions
5. Next Steps and Close

2

Burwood · Burwood Heights · Croydon · Croydon Park · Enfield · Strathfield



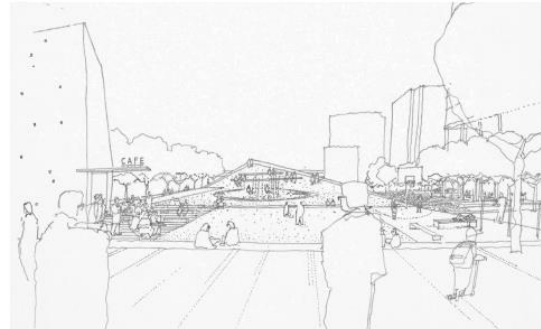
Background on the Project

Introduction:

- Preliminary phase of legacy project
- Multiple community benefits for future generations
- Consolidation of Civic and Cultural Precinct for Burwood

Process:

- VPA
- Design Competition
- Concept Development
- Community Engagement
- Detailed Design



Community Facility and Open Space Needs

- Council currently owns and operates 7 community facilities: 1 aquatic centre; 5 community centres/venues for hire; and a library.
- Fitzroy Hall is largest community space (120 capacity).
- By 2036:
 - An additional 1,875m² of community centre floor space will be required to meet a benchmark of 80m² per person.
 - Additional new parks in high density areas will be required.





Cultural/Arts Space Needs

- Currently no dedicated arts and cultural facilities in Burwood LGA.
- There are also no performing or creative arts centres in neighbouring Strathfield or Canada Bay LGAs.
- Some of Council's current multipurpose facilities are used for arts and cultural purposes.
- Exhibitions, community participation spaces (such as maker spaces), creative arts activities can be accommodated in the new Community Hub space.
- Council has identified the need for a multipurpose performance space.



Indoor Recreation Space Needs

- Currently no indoor recreation centres in the Burwood LGA.
- There is an opportunity to accommodate some indoor recreation uses in the proposed development e.g. badminton, table tennis, dance, gentle exercise, tai chi.
- An analysis of utilisation data for Council's community facilities (for January to December 2018), indicates that the primary booking type across all Council facilities was meetings, followed by exercise. A key finding was that for venues that have space available for exercise, this is the most popular activity.





The Urban Park



7

Burwood, Burwood Heights, Croydon, Croydon Park, Enfield, Strathfield



8

Burwood, Burwood Heights, Croydon, Croydon Park, Enfield, Strathfield



9 9

Burwood, Burwood Heights, Croydon, CroydonPark, Enfield, Strathfield



14 March 2021

Urban Park – Plaza Planting

TREES



Zelkova serrata Green Vase



Spotted Gum



Westringia Fruticosa



Westringia Gray Box



Alyssa Euodia



Cushion bush



Lavender



Banksia Birthday Candles



Kangaroo Paw



Copper Spoons



Myopium parviflorum



Shortleaf Plum Grass



Poa labillardieri



Lomandra Little Con



Yellow Buttons



Kidney Weed



Lemon Thyme



Rosemary



Echinacea



Vanilla Lily



Bulbine Lily

10 10

Burwood, Burwood Heights, Croydon, CroydonPark, Enfield, Strathfield



Urban Park – Materials & Finishes

- Colour
- Textures
- Lighting
- Shade
- Sounds
- Evening use
- Historical & Cultural Interpretation



11

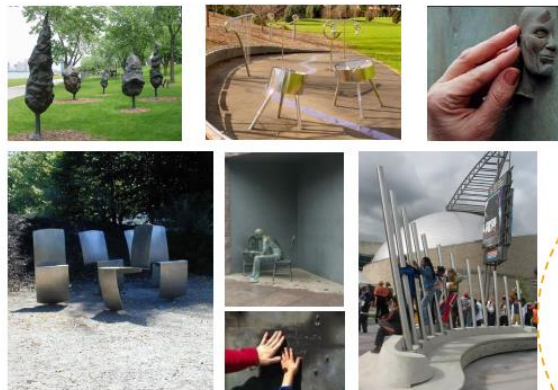
Burwood . BurwoodHeights . Croydon . CroydonPark . Enfield . Strathfield



Urban Park – Public Art Strategy



Reinstatement of *Awakening* and increasing the provision of public art/ identifying and encouraging awareness of Burwood's local creative and cultural identities.



12

Burwood . BurwoodHeights . Croydon . CroydonPark . Enfield . Strathfield

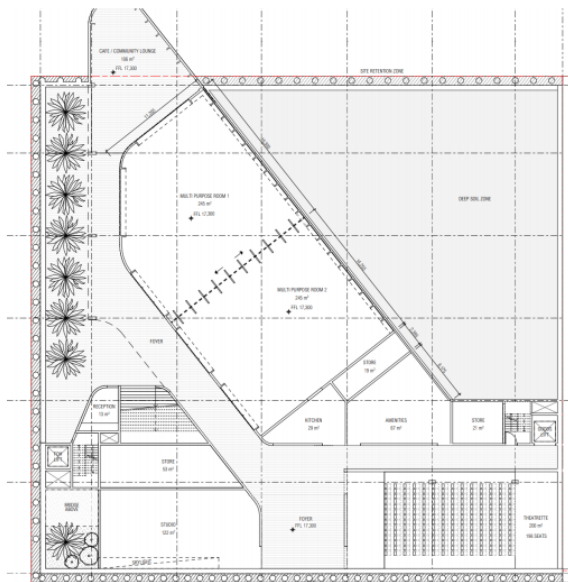


13

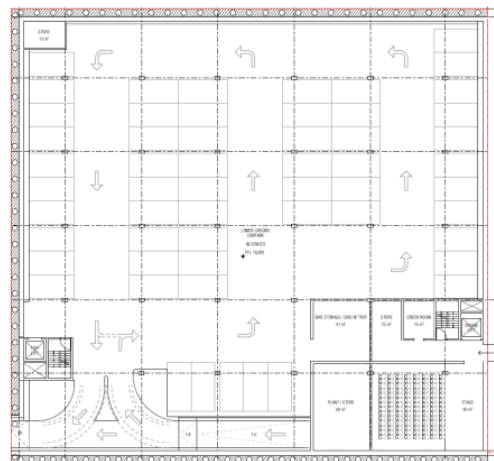
Burwood, Burwood Heights, Croydon, Croydon Park, Enfield, Strathfield

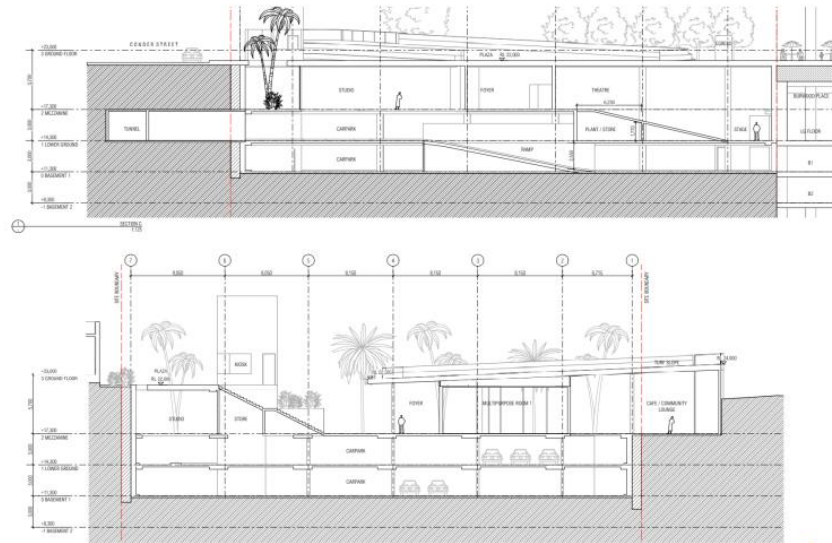


The Cultural Centre



14





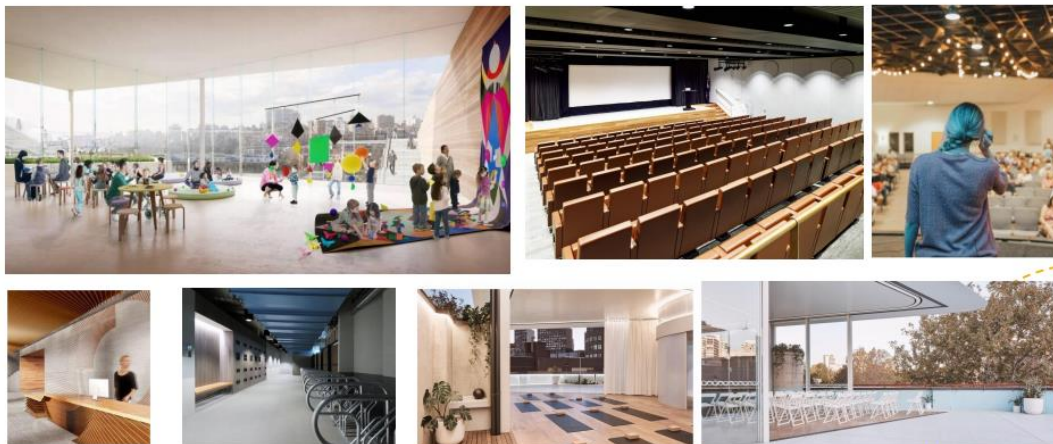
15 15

Burwood, Burwood Heights, Croydon, Croydon Park, Enfield, Strathfield



14 March 2021

Types of Spaces



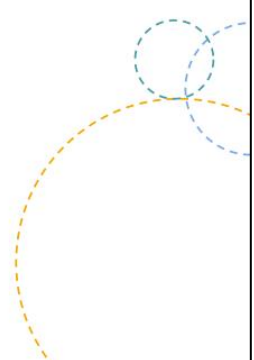
16 16

Burwood, Burwood Heights, Croydon, Croydon Park, Enfield, Strathfield



17

Burwood, Burwood Heights, Croydon, Croydon Park, Enfield, Strathfield



Burwood
Inc.1874

Questions?

February 2021

Burwood, Burwood Heights, Croydon, Croydon Park, Enfield, Strathfield





Small Group Discussions

Understanding Your Priorities:

What is your highest priority space for the centre? What is your highest priority feature for the park?
Is there anything we have missed?

Feedback on Concept Plans:

What do you like most about the concept plans?
Is there anything else you would like Council to consider or improve in the concept plans?

Operational & Program Feedback:

What services, programs and activities would you like to see delivered at the new facility?
How can Council ensure that the new Urban Park and Cultural Centre is open, welcoming and accessible to the whole the community?

Vision for the Centre:

Tell us about your vision for the new Urban Park and Cultural Centre?



Next Steps

- Completion of community engagement program [28 February 2021]
- Detailed design
- Lodgement of the Development Application (DA)
- DA assessment and approval [Additional community consultation]
- Tender process for the project
- Staged construction – 10 year process [Park, facilities and carpark – in year 2 and 3]

Appendix B - Community Survey Instrument

Urban Park and Cultural Centre – Online Community Survey

This survey is anonymous and your comments will be treated as anonymous in any public reports.

Survey findings will be reported to Council and made public at www.burwood.nsw.gov.au

1. In relation to the proposed Cultural Centre, what do you think is the most important type of space for the local community? (Mandatory question, single-select response)

- ☐ Café/Community Lounge
- ☐ Large Multipurpose Community Hall
- ☐ Medium Sized Multipurpose Rooms
- ☐ Flexible Studio Space
- ☐ Theatrette
- ☐ Commercial Kitchen
- ☐ Other. Please specify: _____

2. In relation to the proposed Urban Park, what do you think is the most important outdoor space or feature for the local community? (Mandatory question, single-select response)

- ☐ Public art
- ☐ Water play feature
- ☐ High canopy tree planting
- ☐ Landscaping including shrubs, grasses and flowers
- ☐ Open space including green lawn area
- ☐ Plaza with seating, shade and rest areas
- ☐ Open park access
- ☐ Lighting
- ☐ Other. Please specify: _____

3. What activities, programs or services would you like to see provided at the new Cultural Centre? (Mandatory question, multiple responses accepted)

- ☐ Community events and celebrations
- ☐ Creative arts and cultural programs (e.g. art exhibitions, music programs, artist talks, arts workshops)
- ☐ Sports and recreational programs (e.g. dancing, fitness classes, yoga, table tennis)
- ☐ Theatre based programs (e.g. performances and concerts)
- ☐ Children and family based activities (e.g. after school programs and playgroups)
- ☐ Youth programs and activities (e.g. school holiday programs)
- ☐ Seniors activities (e.g. social groups)
- ☐ Activities for all abilities
- ☐ Education and employment support (e.g. English classes, job seeker workshops)
- ☐ Cooking and healthy eating programs
- ☐ Environmental and sustainability workshops
- ☐ Bookable spaces for hire
- ☐ Council customer service point and information
- ☐ Wi-Fi access
- ☐ Other - Please specify: _____

4. Of the above activities, programs or services what would you consider as the most important to you? (Mandatory, limited open response)

Please indicate your top priority only:

5. What do you like most about the concept plans for the Urban Park and Cultural Centre?

6. Is there anything else you would like Council to consider or improve in the concept plans?

7. What equipment, facilities or design features would you like to see incorporated into the building and park? (e.g. technology, public art, environmental design features etc.)

8. Once completed, how would you like to see the Urban Park and Cultural Centre operate?

9. How strongly do you support this project? (Mandatory question, single-select response)

- ☐ Strongly support
- ☐ Support
- ☐ Neither support nor don't support
- ☐ Somewhat support
- ☐ Not at all

10. Do you have any additional comments or feedback?

Please tell us about yourself:

What is your suburb of residence? (Mandatory question, single-select response)

- ☐ Burwood
- ☐ Burwood Heights
- ☐ Croydon
- ☐ Croydon Park
- ☐ Enfield
- ☐ Strathfield
- ☐ Other. Please specify: _____

What is your gender?

- ☐ Female
- ☐ Male
- ☐ Other

What age bracket do you fit into? (Mandatory question, single-select response)

- ☐ Under 18
- ☐ 18-24
- ☐ 25-34
- ☐ 35-44
- ☐ 45-54
- ☐ 55-64
- ☐ 65-74
- ☐ 75+

What language (s) do you speak at home?

To stay informed about the outcomes of the consultation program and the next steps of the Urban Park and Cultural Centre project, please provide your contact details below. The provision of your personal information is optional.

(Please note that if you are under 16 years old, Council is not allowed to collect your personal contact information without parental permission. You will need to provide contact details for a parent or guardian.)

Name:

Email:

Phone:

Thank you for participating in this survey, your feedback is valued by Burwood Council.