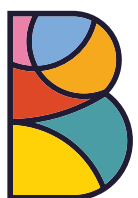
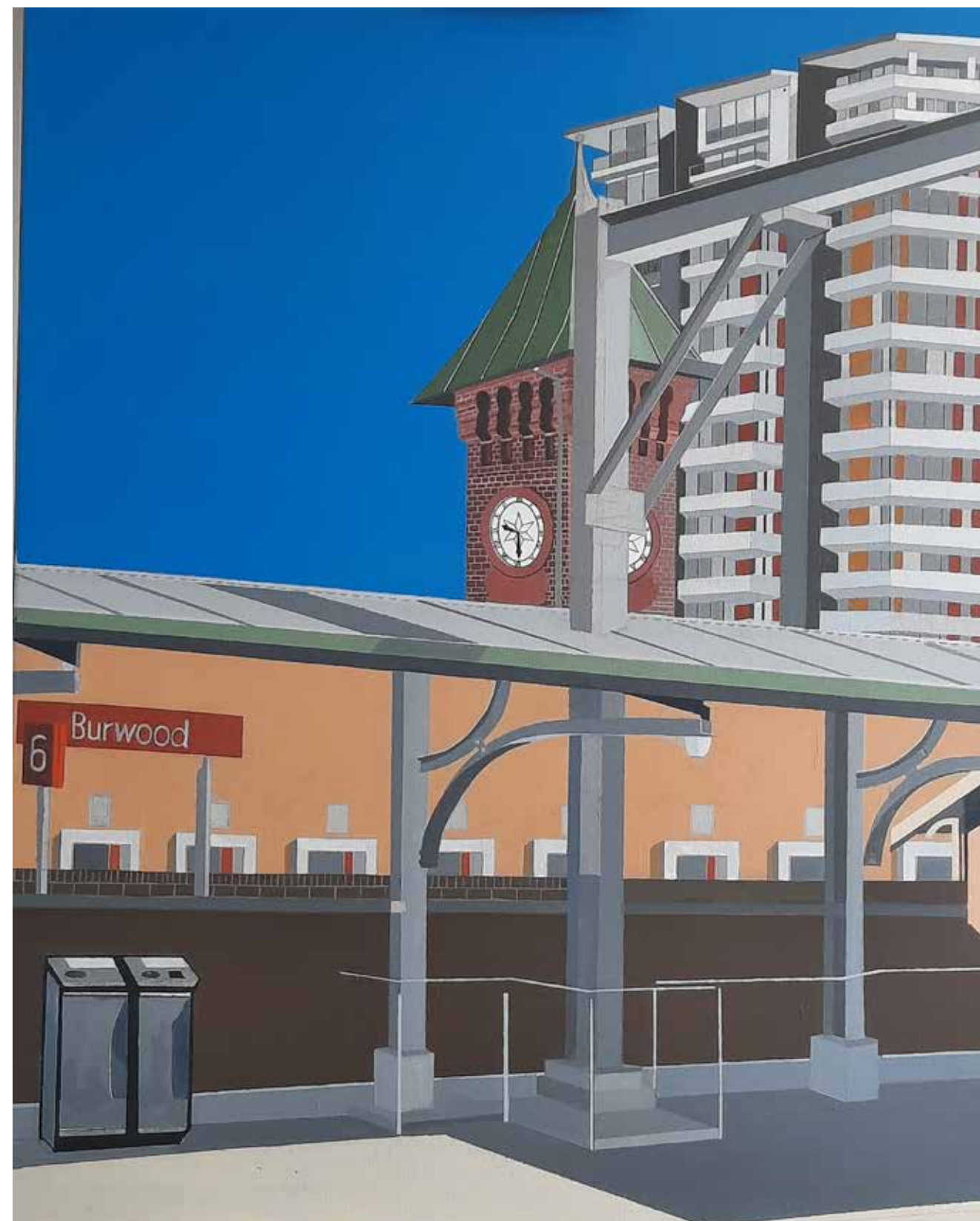


BURWOOD

ART PRIZE 2022



Burwood
Inc.1874



BURWOOD ART PRIZE 2022 WINNER

TOM BUTLER-LOWE

Platform 6, Half-Past 9

Painting – Acrylic on Canvas



MAYOR'S MESSAGE

Cr John Faker

A world without art would be duller, less colourful, and we would all be poorer for it. Fortunately, we don't have to contemplate this nightmarish scenario as our community has a wonderfully talented arts sector, evident by the amazing quality of works entered into the 2022 Burwood Art Prize.

I am always amazed by the incredible talent of our local artists and the skill, patience, and passion that it takes to produce work of such quality.

It is really pleasing to see interest in the Burwood Art Prize remains as strong as ever. This year we had expressions of interest from over 100 local artists and actual submissions of 72 artists who live, work, study or have a demonstrated connection to Burwood, Strathfield, Canada Bay Local Government Areas and the suburb of Ashfield.

This year Council has increased the prize pool to \$13,500 – the biggest yet. As we know, the last 12 months have been draining for the arts community who have had limited opportunities to demonstrate their talents. I am delighted we were able to support the arts in the community, recognise and support our local artists, as well as to increase cultural participation and engagement in our local areas.

Congratulations must go to all entrants. You should be proud, as you have created artworks which will inspire, provoke and engage our community for many years to come.

Council is proud to acquire the Burwood Art Prize and New and Emerging Artist winning works, which will be displayed in one of its facilities after the event.

I would like to acknowledge this year's judging panel Danella Bennett, Amrit Gill, and Louise Zhang for handling the challenging task of choosing the winners with the utmost professionalism.

Thanks must also go to the Council staff who worked hard to make this event possible. The theme for this year's Prize was Burwood's past, present or future – and I am sure you will agree that our artists are bringing the audience on a wonderful artistic journey.

PRIZE POOL

This year, the Burwood Art Prize has an increased prize pool of \$13,500, with three award categories:

Burwood Art Prize

\$10,000 Acquisitive Prize

New And Emerging Artist

\$2,500 Acquisitive Prize

People's Choice

\$1,000 Non-Acquisitive Prize

Burwood Art Prize and New and Emerging Artist awards are selected by the Burwood Art Prize judging panel.

The artwork with the highest number of votes at the end of the exhibition will win the People's Choice Award.

The online catalogue of the exhibition may be viewed via - <https://www.burwood.nsw.gov.au/For-Residents/Our-Community/Arts-and-Cultural-Development/Burwood-Art-Prize>
Voting for the People's Choice Award winner will occur online, with one vote per person. This winner will be announced once the exhibition closes, after 31 March 2022.

JUDGING PANEL

Danella Bennett

Manager Strategic Projects, Public Art
Create NSW, Department of Premier and Cabinet

Create NSW's Manager Strategic Projects, Public Art, Danella Bennett, works with local councils and across government to activate and enliven public spaces with challenging works that tap into local culture and history, relate to site and reflect local community. Previously Danella has worked as a freelance producer and in local government supporting contemporary artists and local community to develop public and participatory art.

Amrit Gill

Artistic Director/CEO
4A Centre for Contemporary Asian Art

Amrit is an arts and cultural worker with experience in producing, programming, strategy, international relations, community development and social enterprise. From 2013 to early 2021 Amrit worked for the Australia Council for the Arts in various roles. As the Council's Director of International Development, she led on international strategic investment across artforms, overseeing the Venice Biennale project and implementation of the agency's first international arts strategy, expanding engagement and investment in Asia and global First Nations exchange. Earlier in her career, Amrit held roles at Milk Crate Theatre, the British Council Australia, and Information and Cultural Exchange (ICE). She holds a Bachelor of Art Theory and a Bachelor of Arts (History) from the University of New South Wales.

Louise Zhang

Artist

Louise Zhang (b.1991) is a Chinese-Australian multidisciplinary artist whose practice spans painting, sculpture and installation. Zhang explores the dynamics of aesthetics, contrasting the attractive and repulsive in order to navigate the senses of fear, anxiety and a sense of otherness reflecting her identity. Her work is inspired by horror cinema, Chinese mythology and botany, adopting and placing symbols and motifs in compositions of harmonic dissonance.

2022

2022 PRIZE RECIPIENTS

BURWOOD ART PRIZE 2022 WINNER

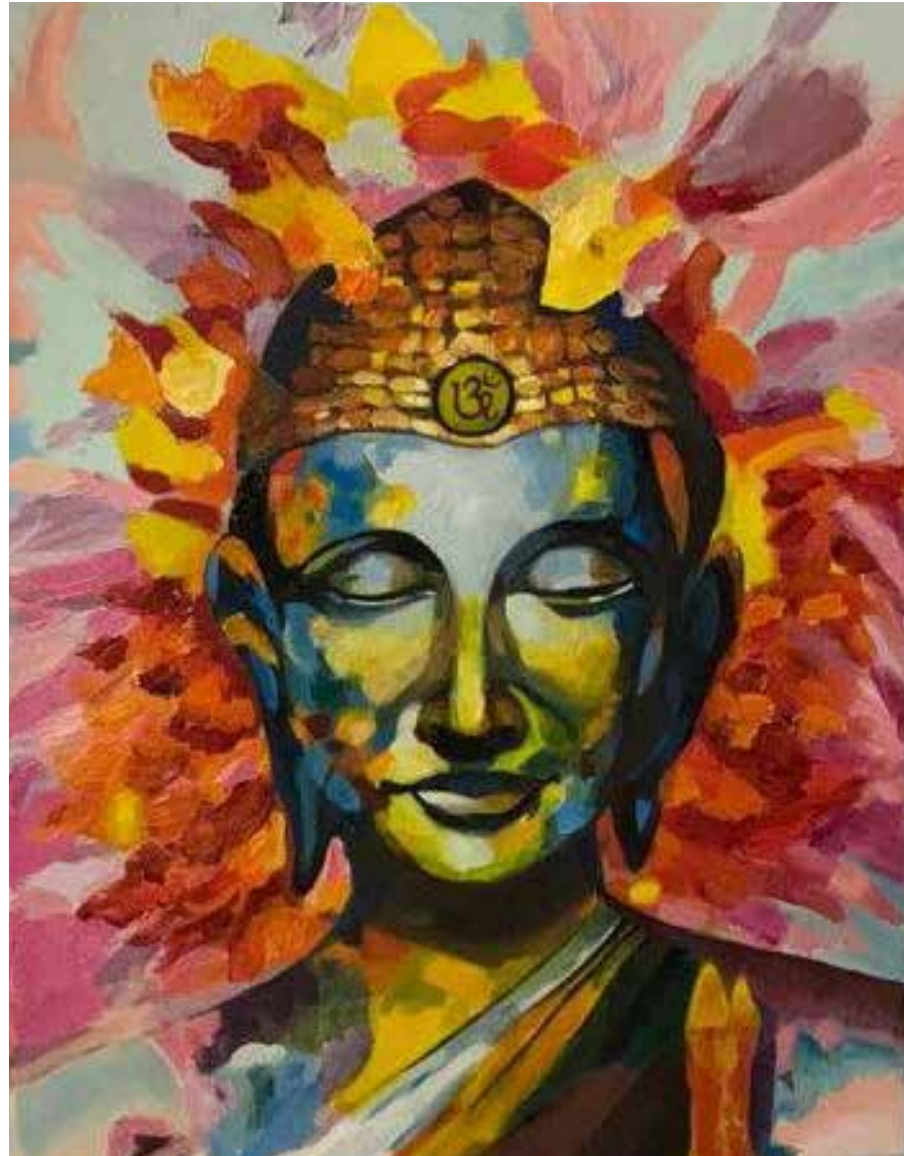
TOM BUTLER-LOWE
Platform 6, Half-Past 9

NEW AND EMERGING ARTIST 2022 WINNER

STACEY FREDERICKS
Woodside Avenue

The winner of the People's Choice prize
will be announced in early April 2022,
following the exhibition, on the
Burwood Council website.

ENTRANTS - PAINTINGS



SAPNA KARAMCHANDANI

Budhha in Me
 Painting - Oil painting on Canvas

While we are in the period of Pandemic in that situation we always remember the past is already gone, the future is not here yet. There is only one moment for us to live, and that is the present movement. So, "Resolutely train yourself to attain peace in the present moment"



TAHLIA HENDERSON

Chinatown in the Park
 Painting - Watercolour painting

Seagulls, Pigeons and an Ibis swarm the Chinatown picnic in a frantic snatch and grab. The iconic street food of Burwood is hard to resist and even harder to share. *feeding birds is not advised



DEBBIE ACHURCH

Soaring Above
 Painting - Acrylic paint on canvas

This work predicts Burwood in the future as the skyline continues to grow. The ever present crane hints at future development. The foreground trees and open space refer to the hope that green spaces and parks will continue to be an important part of the neighbourhood. I've played with colour, line and shape in portraying this urban environment.



NATALIE HAYTER

Burwood Road Noodle Trail
 Painting - Water Colour Painting

This artwork shows the vibrant Chinese restaurant scene of Burwood Road. Visitors are spoilt for choice with noodle eateries, dumpling houses and hot pot restaurants. The density of restaurants reflects the present demography of Burwood, with over a third of residences born in China. Burwood Road dining draws in visitors from surrounding suburbs wanting authentic Cantonese, Shandong, Jiangsu and Sichuan cuisine. It's a busy thoroughfare and the main culinary artery of the suburb.



SONGSHI LI

Rivers Running Towards Ocean
Painting - Ink & color on Paper painting

Burwood is a multicultural city. It's like one of the rivers, all will contribute to a harmony ocean.



LARISSA PASKINS

Plum Tree
Painting - Acrylic painting

Alexander Riley built the first home in the Burwood district in 1814. He cleared 500 acres and introduced into the colony a variety of trees including the plum tree.



DANIEL SPITERI

Sun Shower at Burwood Park
Painting - Acrylic painting

The sun is out and it starts to rain on the colourful flowers in the garden at Burwood Park.



VANESSA PAPASTAVROS

ibis Oasis
Painting - Acrylic Paint on Stretched Canvas

This colourful landscape exudes peace and dynamism, inspired by many afternoons in Burwood Park. I am among the minority that feels a great affection and tenderness towards the Australian White ibis. I view them as more than just an ironic mascot of our urban settings. The ibis is a totem of resilience and survival. Despite habitat loss and climate uncertainty, they have found ways to survive and thrive throughout Burwood's greenspaces and beyond the boundaries of our community. As we continue to adapt to contemporary challenges, I hope the spirit of the humble ibis inspires us with its resilience.



XIU LUO SUN

A Moment in Blair Park
Painting - Acrylic painting on canvas

Sometimes the most mundane are the most beautiful. People often remember the big events, but as a painter, I like to capture smaller moments that I believe can be just as important as those life memorable events. While on a walk in Blair Park, I was moved by this beautiful scenery and knew that this moment deserved to be appreciated and remembered forever.



JIAN JUN WANG

Flower Dance
Painting - Acrylic painting on paper

Still-life artworks are often painted with precision and discipline. I used the opposite approach in this version by utilising a freehand method and embracing an unrestrained, loose approach that I believe captures the true soul of a flower. The colours in the drawing represent the harmonious combination of the flowers, vase, environment, and light.



MINGDUN SHI

Harmony
Painting - Acrylic Painting on canvas

Inspired by the Burwood living environment and friendly community, use the abstract method to restructure the nature and human living place, attempt to integrate the relationship between humans and nature, and reach the realm called "Harmony", I insist human is the part of nature not the king of nature, should live together with nature and animal friends.



ANNA THOMPSON

Journey
Painting - Acrylic paint & markers on canvas

The city of Burwood in the context of an ongoing personal and communal journey, that is past, present and future, emerging from its deep roots, diving into chaos and eventually resulting in a gentle, fresh start. JOURNEY captures the love, passion, struggles, and overall powerful growth that each individual of this diverse community lives through here. A special community that is made up of many different cultures, lifestyles and personalities within city and nature, all merging together in a harmonious peaceful balance.



LEI FENG

2021
Painting - Oil on stretched canvas

The covid pandemic has changed the lives of everyone. While we put on a brave face and try to stay calm. The feeling that death could sneak up on you any minute is ever so present.



GEORGIE SIMONETTO

Paddock to Park
Painting - Acrylic paint on canvas

My inspiration behind this piece was to capture the vibrancy of Burwood Park today in a Hornsey-Lane-mural-style format. Burwood Park was once a paddock and now it is an energetic park filled with culture, colour and community. It is the heart of Burwood, and brings residents together, through playing tennis and outdoor chess or under the sunshades at the playground, having a picnic near the café, enjoying the view of the pond and gardens and honouring the past at the War Memorial Arch underneath the palm trees.



YIWEN BO

Burwood Morning Sunrise
Painting - Oil painting on canvas

The painting was completed at Burwood at the time when Covid-19 virus is slowly going pass us. We finally see a glimpse of light at end of tunnel just like the beautiful morning sunrise.



LOLA TER MEULEN ORTIZ

Home-Cut

Painting - Oil paint on Canvas

Having to live through lockdown in the past few months as a young high school student has been an exhausting journey of discovery. This artwork to me, is how living in Burwood today and the changes in our society has affected me. Throughout lockdown, being limited to the access of hairdressers etc I had to do everything myself. I cut my own hair, pierced my own ears, and other things my mum wasn't happy about. All of these small tasks amounted to a change in my own identity and my form of expression.



ESTELA DOMAOL

Giant Chess Set at Burwood Park

Painting - Acrylic Painting and Watercolour on Canvas

The giant chess set has been part of Burwood Park's landscape. The chess arena is open for everyone to watch and analyse the moves of the players. The inner west's mentally sharpened citizens meet here to duel their prowess.

Everyday, the scene in the arena varies. Sometimes, office workers would spend their lunch break here. The passersby would arrive to challenge one another. The senior residents are constant spectators who spend time getting amused by the talent of the players. Indeed, the giant chess set provides delightful entertainment to the community.



GUZALIYA XAVIER

Burwood Park

Painting - Acrylic Paint

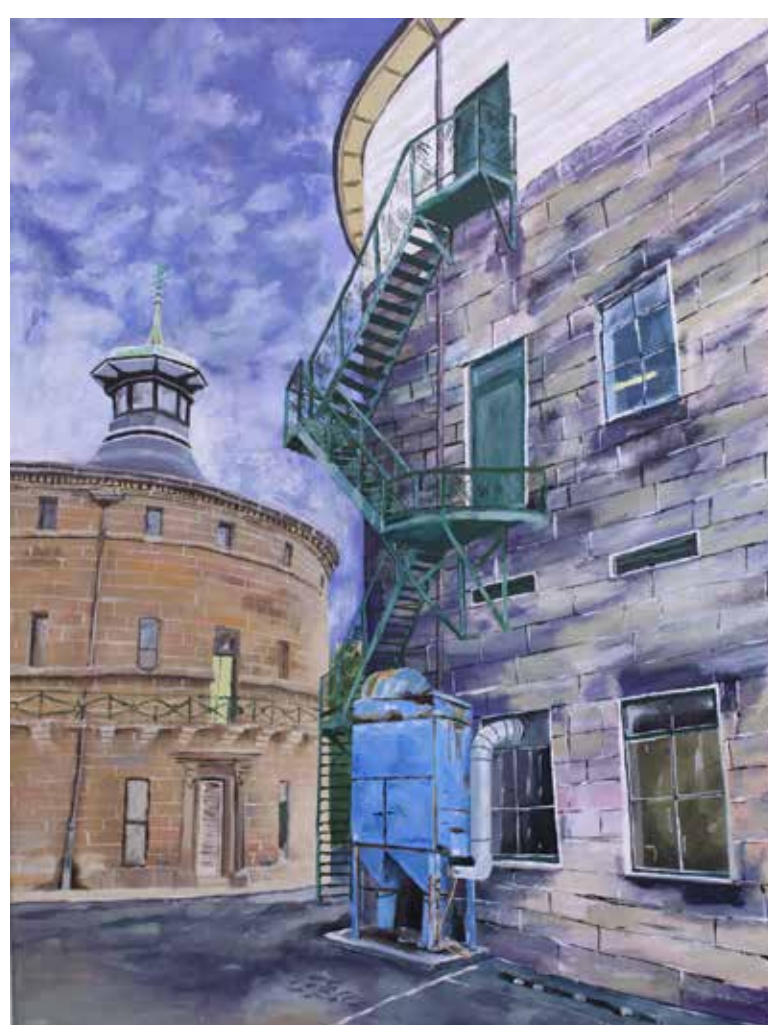
Burwood Park is a large beautiful park in the middle of busy suburb. It has everything: historical and cultural landmarks, gazebos and cafes, playground and lake, trees and ducks. Perfect spot for any activity you would like.



KATHE PHANG

Golden Hour
Painting - Acrylic on canvas

This painting depicts the view from my apartment at lunchtime. While the lockdown is now over, I wanted to depict the habitual experience of the time and elements unique to Burwood that made life bearable. This view to the old terracotta rooftops, part of the historic beginnings of Burwood, is contrast against the spread of food on the table, representing the growing diverse culture that has established itself and enriched Burwood. While the setting is meant to evoke a comforting domestic atmosphere, I hope people will look outside, and ponder the future, as I did in this moment.



LILIAN STOCK

Fenestrations of National Art School
Painting - Acrylic on Canvas

A fenestration is the arrangement of windows in a building, simultaneously describing the act of having small transparencies or openings. My work focuses on the transparencies within the industrial landscape; the liminal spaces that inspire creativity and innovation. I have attempted to feature a colourful portrayal of the built environment; an artistic hub.



LARA MARASSA

The Ground Beneath
Painting - Acrylic on Canvas

Whilst walking through Burwood, although engulfed with urban life, the natural landscape still held a presence amongst the combusted environment. I intentionally chose to enlarge this particular rock to emphasize the long lasting impact that the natural landscape has had and will have, in both Burwood and the natural atmosphere.



ASTRID DICKSON

The Entry
Acrylic on canvas board

Overwhelmed by hostile environment, the aching, longing and multicolored Pandemic BODY is suspended, floating, fragmented, perplexed, isolated, emerging and submerging, shrinking and extending, and struggling to regain control and survive.



ANGELA WU

Preservation
Painting - Gouache on Board

My artwork captures the preservation of my grandfather's items after he passed. Inspired by the use of plastic wrap to preserve food, the act of placing his sentimental cassette tapes in a plastic bag, or viewing his watch through the plastic barrier, is a representation of preserving his passions and what was important to him, but sealing it off to the outside world. My grandfather moved to Burwood in his late 50's, with only his most sentimental items. His memories, childhood and family were captured in these cassette tapes. Although he is no longer here, preserving items which I heavily associate with him, provides a sense of comfort and reassurance that he will be remembered forever.



STACEY FREDERICKS

Woodside Avenue
Painting - Acrylic on Canvas

I painted this work during COVID lockdown in 2021. Confined to the streets around me, I found solace in the familiarity of Burwood, of home. Walking along Woodside Avenue one morning I noticed the trees wave in the wind.



LACHLAN WARNER

Burwood Clay Enso
Painting - Burwood Clay and acrylic medium

Burwood Clay Enso is a painting using local clays as both pigment and media. The red clay soil comes from my backyard in Burwood and the yellow clay comes from Rookwood Cemetery. The clay soils have been sieved and mixed with acrylic medium to make a paint. The Wangal clan live on, with this soil, with its history, and with many others from across the seas. The open circle is an Enso, a Japanese Zen image that symbolises the void, imperfection and incompleteness. It is also about our living and dying and regeneration, coming as it does from a grave.

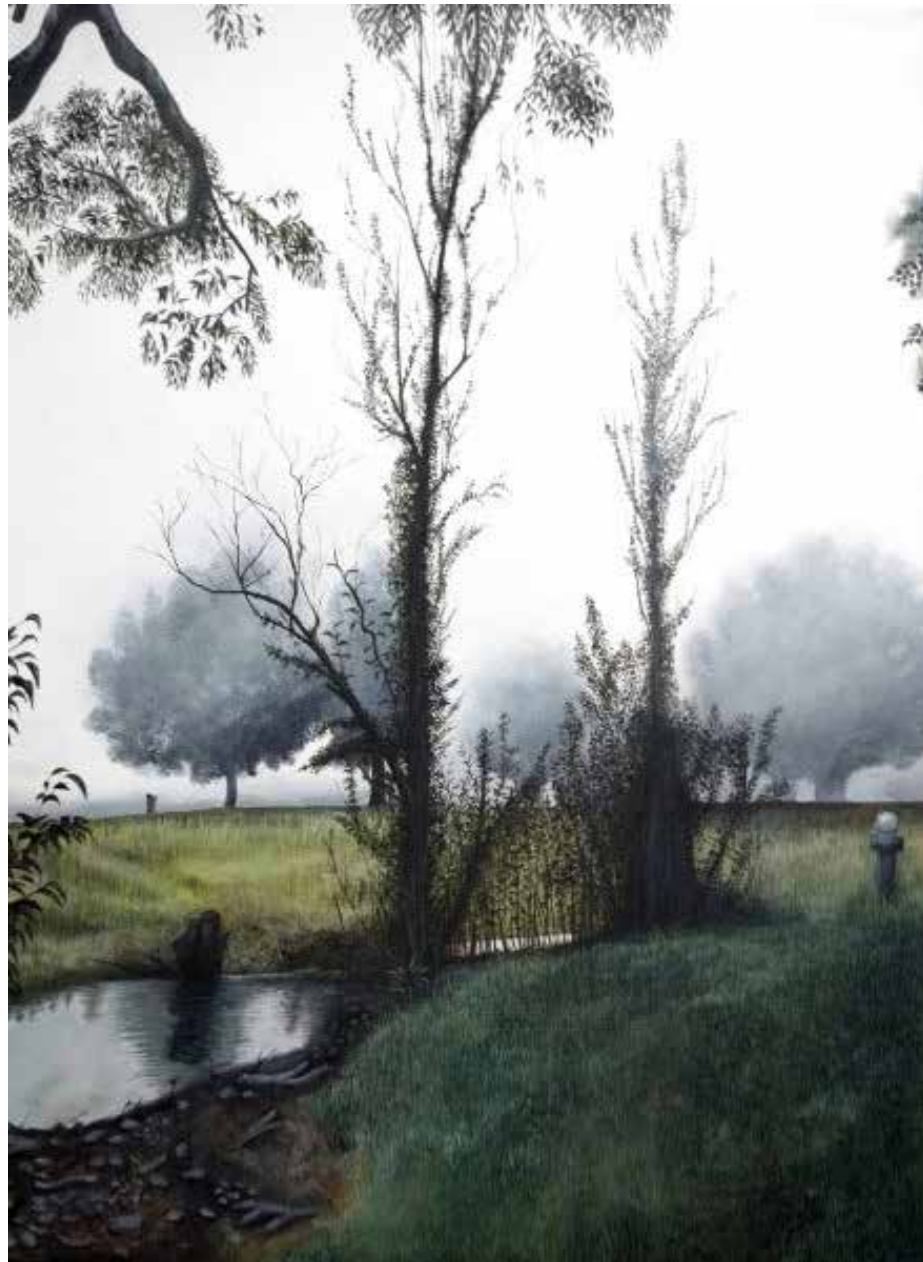


KATHY SHUM

Burwood Park #COVID-19art

Painting - Watercolour paint and Ink pen, 216 gsm sheet. Loose sketch technique where you paint the watercolours loosely on the paper and, once dry, you sketch over with an ink pen.

'During COVID-19 lockdown, I began experimenting with watercolours for the first time ever. What I love about watercolour art is that you don't know how the paint will bleed on the page or how it'll appear once dry. Often, this uncertainty led to something amazing. It made me reflect on extending this approach to watercolour painting, to pandemic life. I created one of my favourite views from Burwood Park. The park was a real source of comfort for me during lockdown enabling me to get away from my dining table-cum-work-from-home-office and 'do laps', enjoying the greenery, wildlife and fresh air.



ALEXANDRA SACH

Mourning Veil

Painting - Acrylic Paint

" 'Mourning Veil' illustrates the vestiges of the first settlement along the banks of the river around Mortlake and Burwood in 1788. In his journal, The British First Lieutenant William Bradley wrote of seeing the Wangal people, the Indigenous Custodians of this area, cooking mussels and other foods over the fire that European settlers had left. The sole lamp painted in 'Mourning Veil', juxtaposes the natural landscape portrayed. This lamp is symbolic of a calm before the storm of Western settlement, in that they have left something that disrupts and contrasts the natural landscape, visually portraying a hint of disturbance and contradiction left that seemed unimportant or irrelevant. But soon left a veil of mourning and pain across the entire landscape, as an invasion of settlers ran the Wangal people from the home and connection to this land."

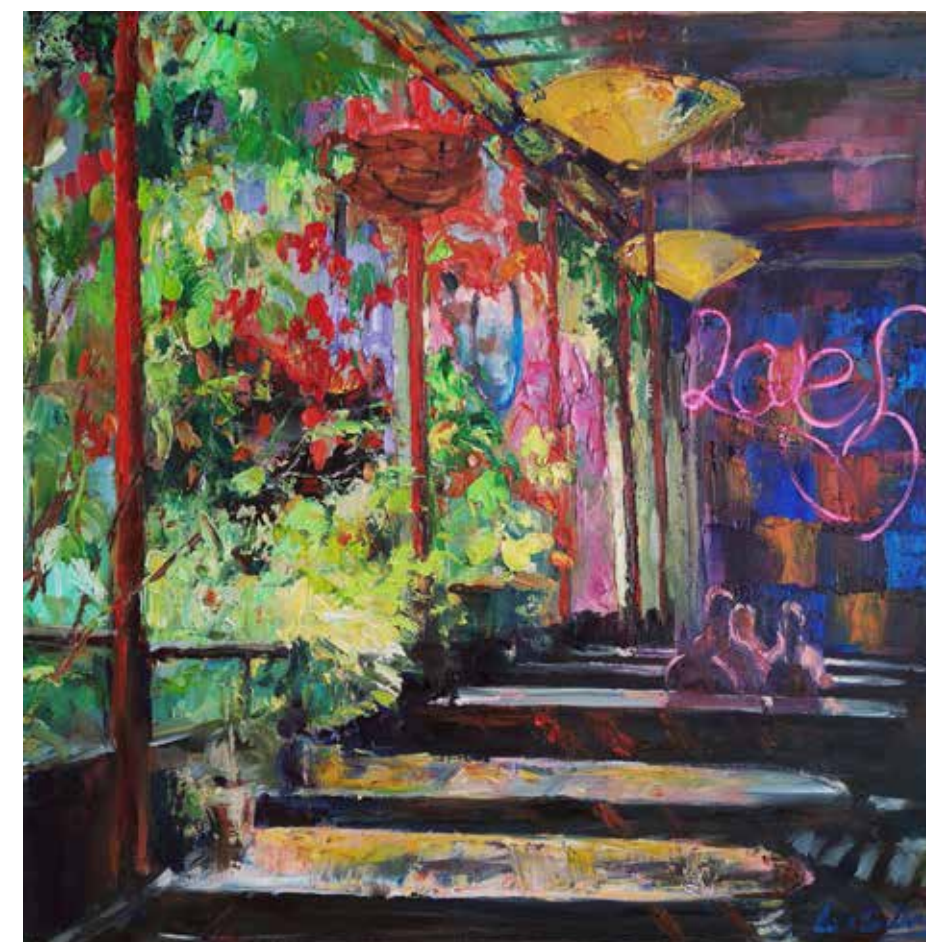


YEHNA JEONG

Rebirth

Painting - Acrylic on Canvas

My artwork encapsulates the natural and organic elements of its unique and uninterrupted environment. Nature is all around us, and its artistry is time after time overlooked. Inspired by this notion, the earthly landscape seen within my work serves as a reminder of the fragility of the natural world and the beauty hidden within its 'flaws' and 'imperfections'. The colour palette captures the soft earthy tones of the natural realm, which I have attempted to bring a sense of energy to through this close up composition. Through applying expressive strokes against a still background I pay homage to the many facets of the land and hope Burwood in the future will be able to 'rebirth' into a prosperous, healthy nature filled environment.



LESLEY ZHANG

A Scene in Chinatown BURWOOD

Painting - Oil on Canvas

Burwood China town is my favourite place to wander around, In the past two years the place has experienced a lot of setbacks due to the pandemic, especially during the last 4 months lockdown period, while the restaurants and small shops were closed down, the place looked sparse and deserted. My heart was heavy when I occasionally passed through. Just one week after the lockdown was lifted, I went back there. I saw this open space shared by several small restaurants. The bright sunlight filtered through the trees and flowers, casting beautiful shadows in the outdoor space and the interior of a restaurant which has gorgeous decorations. The complement of the interior and the exterior formed a vibrant and colourful scene. At that moment, I felt inspired and decided to create this work using the theme. I hope in the future of these small businesses that survived the pandemic is as vibrant and bright as this painting. "Bright" is what I was intended to enhance. I mainly used palette knife for this work and some parts were painted with very thick and expressive oil brush strokes.



ERIKA CHOLICH

Morning Clippings
Painting - Oil on canvas

These Bottlebrush and Corral Berry blooms as well as the Jacaranda pods were locally sourced and painted from life. They are a testament to the beauty of Burwood's green spaces, parks and tree lawns alike, that provide oasis for the community particularly as we endured limited freedom of movement. These local dedicated areas filled with flora and fauna provided us with places of peacefulness and beauty with which to nurture our mental and spiritual interiors. Perhaps the challenges of this past year have made us more appreciative of their value.



GIGI HUANG

Self-conscious
Painting - Acrylic, ink on paper

The community that an individual is surrounded by, influences, informs, and plays an important role in their own identity. In return, the community is shaped by the differences of its members and bonded by their shared similarities and ideals.

Having migrated at a young age to Australia, my interest lies within intersectional identities, immigrant, and migrant experiences. 'Self-conscious' is a portrait exploring my ever-evolving sense, understanding and negotiation of one's identity. Growing up around Burwood, I have seen the suburb transforming, merging old with new; symbiotic of the current period this community is undergoing - of negotiation, change and self-consciousness.



KATHRYN O'CONNOR

Time For Tea
Painting - oil paint on canvas

As our city expands and population increases, we continue our every day madness without so much as a thought to the impending crisis of climate change. The clock keeps ticking, the water keeps rising, we are drowning in our own refusal to acknowledge our destructive behaviours. We turn a blind eye as perhaps the only way we can cope and in another plastic cup, we drink tea and forget.



BONNIE KIM

Far Away
Painting - Acrylic medium

An opened meaning but basically this artwork means to show that we are "far away" from lockdown and all the stuffy air stuffed in your lungs to get unleashed and showing fresh air that you could feel from this artwork.



TONY MIGHELL

Vittas
Painting - Oil on Linen

I live on Saltwater Creek in Concord, a tidal creek that drains into Hen and Chicken Bay. My studio is downstairs in the old garage looking over this little bit of tidal water, the last wet remnant of what was once a large swamp area that is now houses, open parkland and Massey Park Golf Course. Not only is this a tidal inlet from the bay it is also the outlet for storm water draining from the surrounding areas. It would once have been the natural outlet for water flowing down from Burwood and the higher southern suburbs. There would have been many of these small canals that drained the water from the low hills of Burwood, some still remaining as concreted culverts cutting through the suburb of Burwood and reminding us of how the land, water, drainage and in some rare cases vegetation existed before white settlement. My work speaks to this canal, the birds that live on it and the place I live.



SUENNA JEONG

Lucid Walk in Burwood
Painting - Acrylic on Canvas

My artwork depicts a family taking a walk on the beach as the sun sets with the streets of Burwood in the background.



MICHAEL WARREN

The Sky is the Limit
Painting - Acrylic paint on canvas

The painting is abstract in its form. The abstract low rise buildings represent the past, the scale of historical development. The high rise buildings represent the future growth of Burwood, a growth that does not ignore the past by removing it but instead stands proudly beside it. Burwood is developing into a larger more diverse and futuristic modern city. The changes of colour represent the change and evolution of Burwoods rich cultural diversity and acceptance of cultural inclusion. The sky represents the idea that Burwood was never grounded in the past but instead embraced what was good and defining it's sense of place. Burwood reaches for the sky in developing its diverse and evolving Culture and Architecture. The clouds also reinforces the gentle, subtle movement of change within its community. The sky the limit for Burwood.



SAM TSANG

What you can't SEA!
Charcoal, gouache, acrylic paint and ink on paper and cardboard. Painting - spray paint and paint on canvas

My painting shows the importance of preservation and protection of our oceans and sea life. Our actions can have serious consequences. This is a metaphor for the preservation and protection of the past Burwood. While I am supportive of increasing density and modernisation of the Burwood community, it is important that we preserve and maintain Burwood and its history. We shouldn't let the historical federation style houses and mansions be replaced with high risers and cheap new builds that do not have the same longevity as these historical buildings. We need to protect the future of Burwood and its originality.



SHIRLEY YIN
Timeless Clocktower
 Painting - Acrylic on Canvas

Irrespective of time, the Burwood Road streetscape is anchored by the clocktower at the former Burwood Post Office. The greyscale snapshot reflects the past, with the old steam tram running up Burwood Road. While the steam tram has been decommissioned, this piece highlights the importance of retaining cultural heritage elements as the world around us evolves into the future. The present day sees a range of multicultural influences in the bustling streetscape. Meanwhile, the future is open and reimagined with Burwood City Council colours, showcasing Burwood as the vibrant hub of Burwood City Council with a bright and sustainable future.



BOZANA RANDJELOVIC
United Confinement
 Painting - Acrylic, charcoal, ink, pastel

In the recent past, Burwood was put under a tougher lockdown than most of our neighbours. We felt confinement as a collective. United in our yearning for freedom, represented in this piece as wings. There was darkness but together we emerged.



LUCY RADER
Breakfast
 Painting - Acrylic on card

My artwork is a collection of works painted in acrylic on the back of boxes that originally packaged breakfast items. The works capture the idea that breakfast, especially weekend breakfast, is a group event that facilitates community, either within a family or with neighbours and friends. Breakfast as a meal, is growing in importance as a meal to be had out and enjoyed, and this is seen at the growing range of cafes that I pass and frequent on my way to school in the inner west. In my work, I have chosen to single out individual representations of the breakfast meal as well as have one larger focus piece that represents the community feel of breakfast around the table.

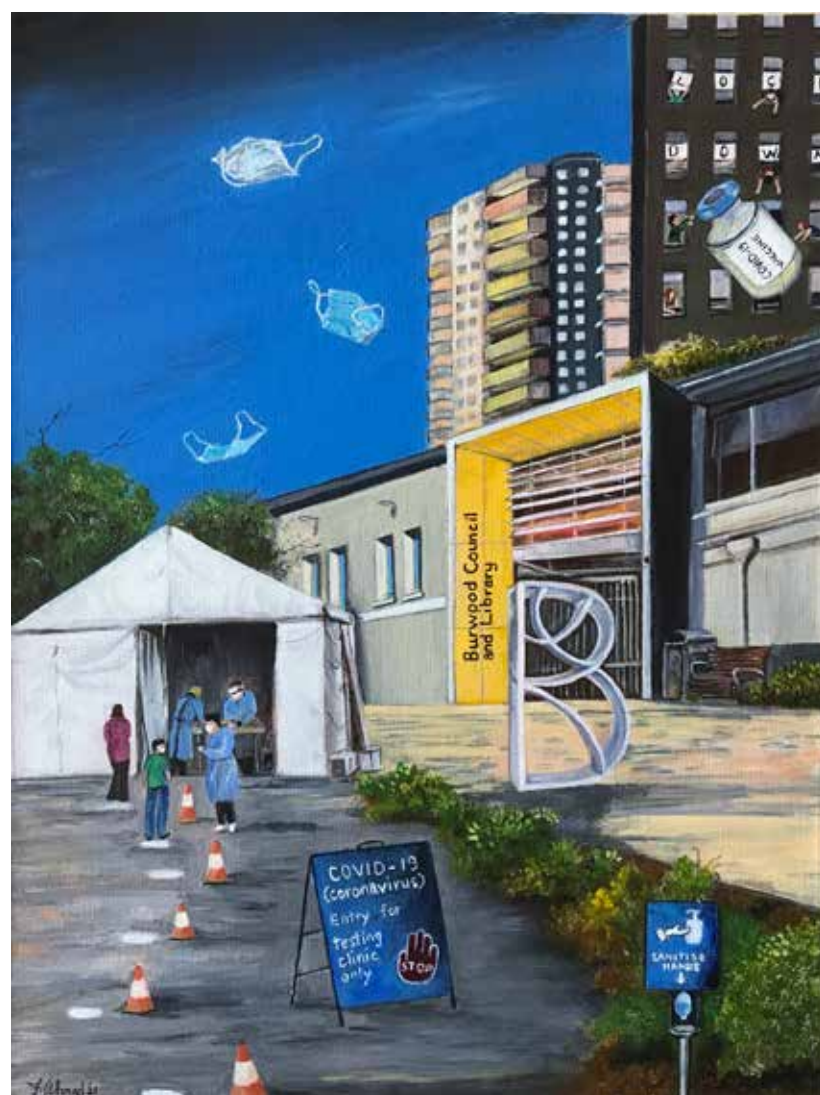


LINDA SWINFIELD
Family as Structure (blue), 2021
 Painting - Acrylic Paint, charcoal and medium on paper (using silkscreen processes).

Family as Structure (Blue) 1, 2021 references the site where my family made bricks in the 19th century. In lockdown 2021 I initiated a new series of prints using paint on paper with charcoal. This series is based on drawings made whilst I was Artist in Residence at Thirning Villa in 2015.

During this residency I became fascinated with the structure of the truss bridge forms at the Grosvenor Crescent site where they lived and its related histories at The Cadigal Reserve.

Over time and during this year my studio process allowed the forms to shift into chrysalis like forms.



FARZANA AHMAD

This Too Shall Pass - E21/48140 - Correct artwork
Painting - Acrylic on canvas

'This Too Shall Pass' is a documentation of 'Burwood in present' during the coronavirus pandemic. It depicts the surreal transformation of this bustling suburb into a ghost town, as it scrambles to combat an invisible enemy. The iconic Burwood Council building has been used to symbolise the suburb's fast-growing reputation as a hub of art, culture and human activity. Covid-19 pop up clinic with social distancing is shown. Floating syringes, vaccine vials and masks depict the current prevalent mood and atmosphere. People in the windows symbolise the confinement of lockdowns. The title is a reassurance that there is a light at the end of the tunnel.



EBEN WHEELER

Light Breaks over Liverpool Rd
Painting - Ink on woven watercolour paper

The mouth of the Hume Highway, Liverpool Road, snakes along the edge of a suburb worse affected than most by Covid. And at times a harsh and dreary road bordering a wounded slice of urbanity. Nevertheless, beauty is in the eye of the beholder. All things can be seen, in this case quite literally, in a positive light.



GIN LEE

I am with You - E21/47474
Painting - Watercolour and ink

COVID-19 pandemic caused tension and uncertainties amongst communities, friends and families during the lockdown. It is certainly grateful to know there are many people out there helping the vulnerable and supporting those who are going through a hard time mentally. I was inspired to create this piece to show people of Burwood and NSW will have your back and be there with you all the way, present and into the future. The trust and connectiveness is vital for our recovery path.



ANDREW CHIOU

Unsung
Painting - Watercolour, gouache, acrylic and inks on 220gsm cold press paper.

A tribute to the unsung and oft times, surrogate 'frontline' workers so prevalent during the COVID19 lockdown in Burwood. The food delivery person is often seen everywhere, any time relentlessly doing on our behalf, what those behind locked doors, cannot. The blaze of colours shown how the unsung dashes from place to place, seen only briefly, and to disappear again, leaving a trail of their presence in almost every corner of Burwood.



CLARE HOOPER

My Girl Daisy
Painting - Acrylic

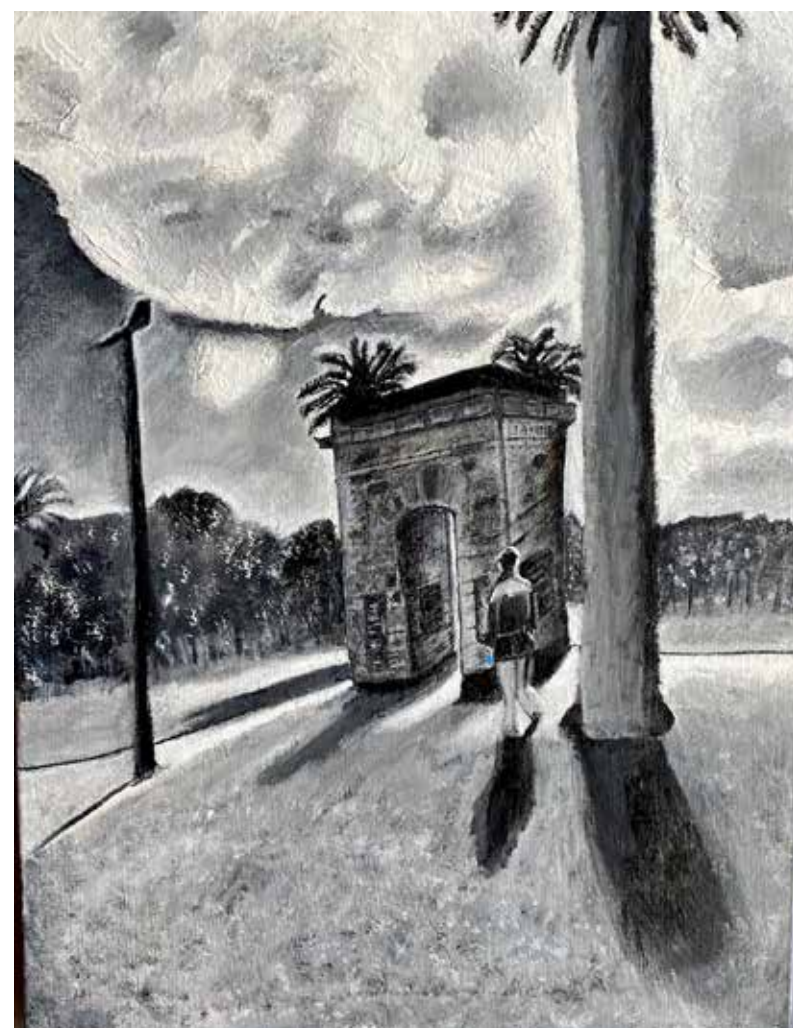
I have a preoccupation in painting birds in the area. I find they really pull my artistic strings in, flight, in trees, in nature. I am a colourful artist and the birds in the environment provide me with great inspiration.



TOM BUTLER-LOWE

Platform 6, Half-Past 9
Painting - Acrylic on Canvas

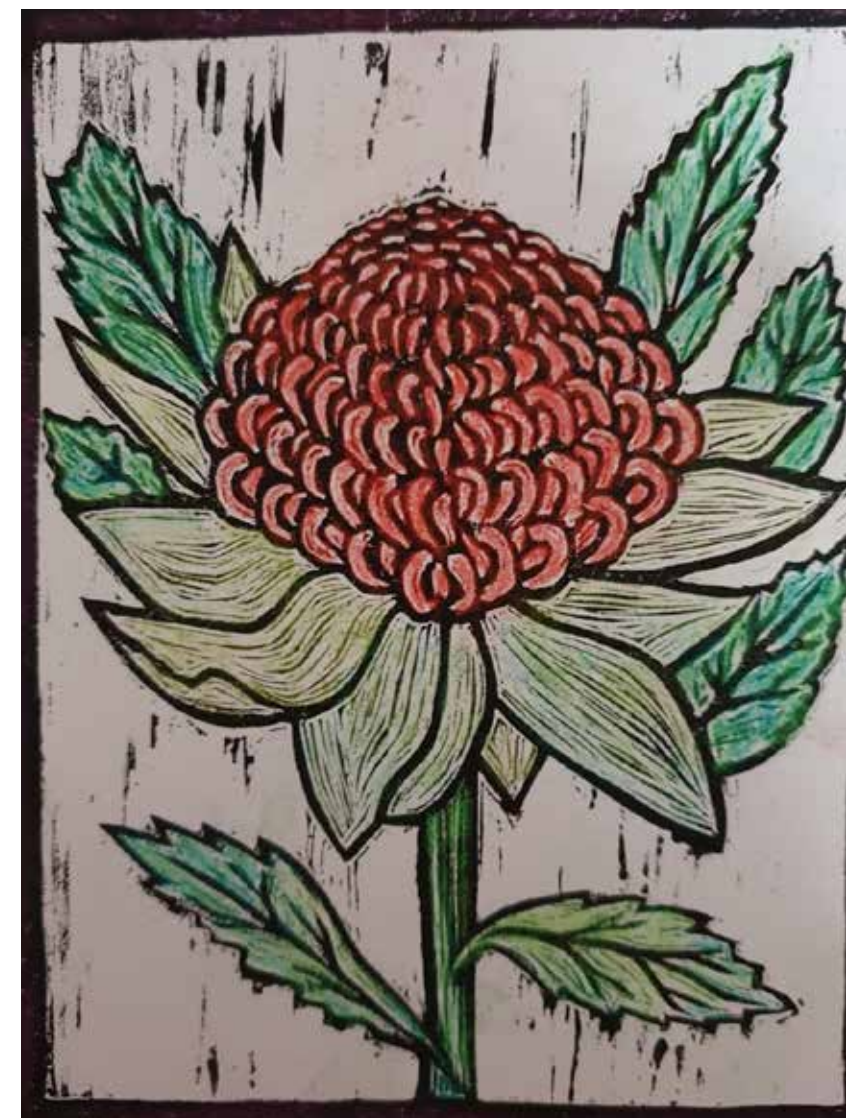
It depicts the older Burwood institutions of the Railway and the Post Office (Clock Tower) witnessing the everchanging Burwood skyline of residential and commercial development.



ELIZABETH YOUNAN

Burwood: The Brave
Painting - Acrylic on canvas

"Burwood: The Brave" conveys the amalgamation of past and present acts of bravery. The lights, shades and lines focus the eye towards the Burwood War Memorial Arch where a lone girl stands gazing, solemnly contemplating their sacrifice. Upon closer inspection one will see the bright blue mask dangling from the girl's left hand; the only presence of colour. A symbol of protection, of spirit, of hope.



ROSANNA FERLITO

Beautiful Waratah, Beautiful Burwood
Painting - The medium is a combination of black ink, watercolours and coloured pencils

The artwork of the single waratah signifies the suburb Burwood as it encompasses its beauty and identity changing over time from the past, present and future.



SARAH YIM

Magical Sanctuaries

Painting - Sketching with bright playful and vibrant colours incorporating shape colour and depth.

Celebrating the magic, playfulness, colour and vibrancy of the beautiful natural landscapes of Burwood. swimming helped the minutes waiting go fast.



LILLIAN SYTERMANS

A Winter in Burwood Library

Painting - Watercolour on Canvas

A Winter in Burwood Library is my depiction of the theme of Burwood in the present and future.

I depict in my watercolour painting a tree lined forest leading the eye to the new Burwood Library. This is reflective on the cosy and welcoming atmosphere of a library, as I have captured in the use of a light blue and dark blue contrast, with the yellow colour of Burwood library standing out in the piece. This is a contemporary painting that utilises texture and colour contrast to depict my perspective of Burwood through my love of painting and reading here.



MICHAEL RYAN

Cooks River from Flockhart Park 1874

Painting - Acrylic paint and mixed media on canvas paper

As a professional urban planner having worked in and around the Burwood area for many years, the history of the Cooks River has always been an area of interest to me. This dates back to when the River was regularly used to dump waste from a multitude of industries, especially tanneries from the mid 1850s to the early 1900s to then becoming a popular swimming and boating destination. Over the course of time, with the establishment of various foreshore working groups and legislative amendments, the River today is testament to Council's long term vision and the importance of protecting our environment.



FRANCES MIANO

Watchful

Painting - Sketch on solid card with water colouring capturing earthy hues and tones, shape and depth.

Our beautiful native short beaked echidnas lived alongside the Wangal people of our Eora nation.



**EURELLA LINKS - PAOLA VEDDOVI,
RENATA CALABRIA, CAROL WHITE**

Australiana Christmas Collection
Painting - Sketch on solid card use of bright, vibrant water colours.
Celebrating an Australian Christmas



HELEN BRONTE BOYD

Fig Tree & Magnolia Tree Femme
Painting - Mixed Media acrylic and mediums on canvas

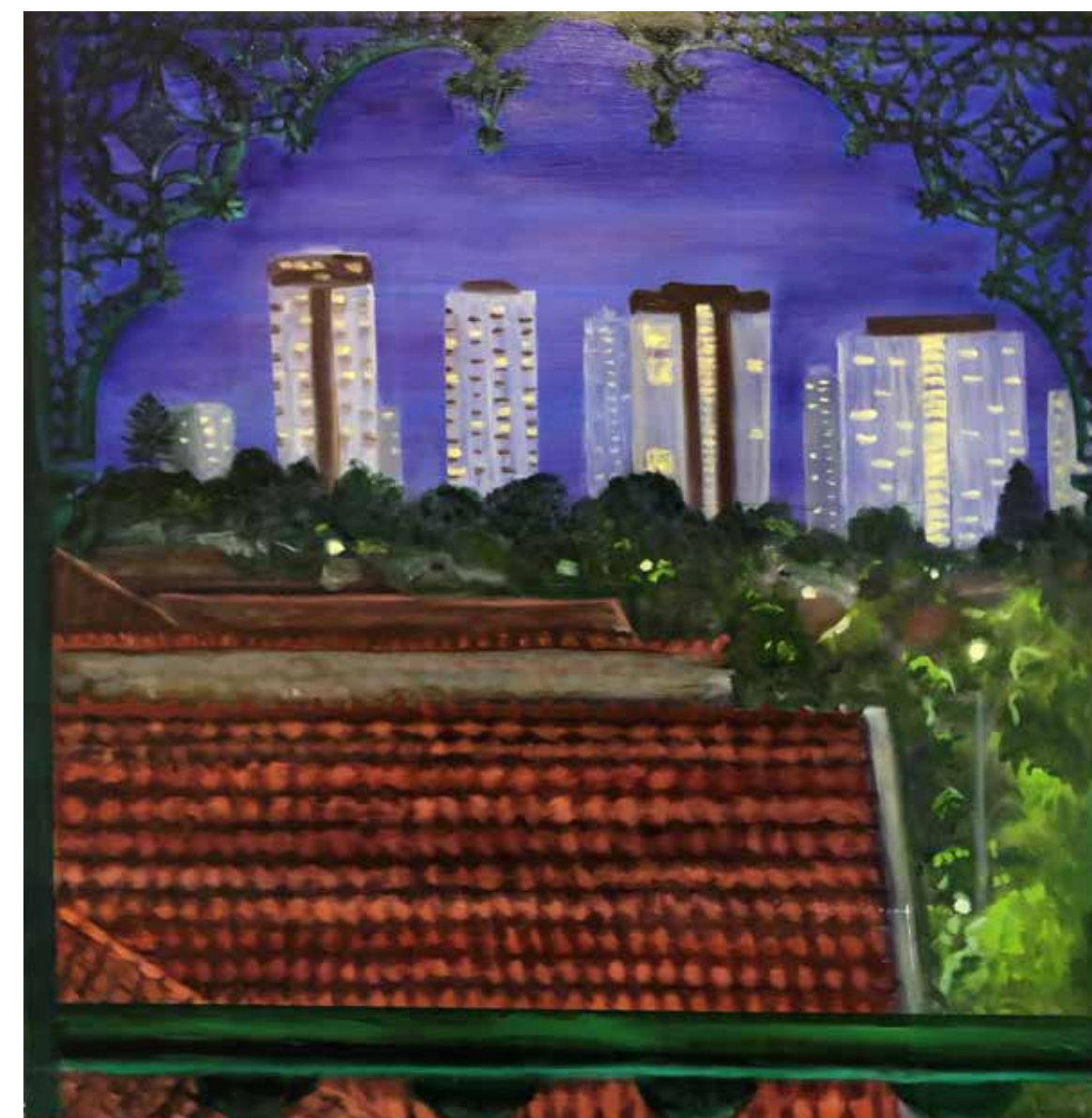
This artwork has been inspired by the native Australian Fig Trees found growing in abundance in Burwood Park, as well as displaying natural beauty they provide shade, shelter and a home fauna in the park. They are a prominent feature of the Park & their roots offer sculptural beauty after being grounded in the soil for many years, which in turn makes one feel calm on walking under the trees.



GLEND A CARTER

Afternoon Shower, Burwood Park
Painting - Acrylic

Burwood Park is situated at the heart of the community. It is an old park, which has been constantly updated for people to enjoy. Many students traverse the paths to and from school, chattering in small groups. It is always delightful to see people exercising early in the morning, lunching on the beautiful green well tended lawns, and enjoying this peaceful large green space with the soft sounds of water. It is also a habitat for so many birds, reptiles and small mammals.



KATE MORTON

View from my Balcony
Painting - oil on canvas

My house in Burwood was built on a hill in 1883. When I stand on my balcony in the evening and look over to the Burwood CBD, I often wonder what vista the first owners saw nearly 140 years ago. How has that view changed over the years of this house? My view is the sparkling towers of units and offices surrounded by lush gardens and trees. What will be the view 140 years from now?



CHANELLE STEVENS

Burwood Chinatown
Painting - Watercolour.

Historic Buildings that have been redeveloped for a modern context, I've used watercolour to represent the vibrant culture of Burwood life.

2022

ENTRANTS - DIGITAL ARTWORKS



RACHEL HANCOCK

Step Back In Time
Digital-Still Artwork - Digital Collage

Stepping back to The Burwood Westfield Shoppingtown's Opening Day, 11th October 1967.

I incorporated a newspaper advertisement that was featured in The Daily Telegraph.

The opening of the new shopping centre would have been so exciting for locals. Somewhere to do most of your shopping, all under the one roof.



TATIANA PENTES

Self-portrait with a Lady from Shanghai (1930s) in Burwood Chinatown
Digital-Still Artwork - A digital artwork photo collage of archival photographs from Shanghai China 1930s (上海 中国) and contemporary digital images of Burwood Chinatown.

I wanted to express the pressure and uncertainty that we feel during this period in time where we are living through a pandemic -unable to make solid plans for the future, burdened with the work that we have to do in the present, worn down by the months we've already spent like this.



STEVEN SANDNER

Fern Dreaming
Digital-Still Artwork - Generative Adversarial Network using own watercolors and photography as ai fodder.

Ferns, forest and life.



MICHAEL SARKIS

Burning Fluorescent
Digital-Still Artwork - includes digital photographic work

A digitally edited piece of a combination of Burwood and other Western Sydney stations within a futuristic setting, a setting that despite the past two years, would have been inconceivable, but now feared and a very real possibility.



PATRICK DAKHOKHE FAROUHA

I will never lose the love for arriving, but I am born to leave
Digital-Still Artwork - 3D rendering program (Blender) and Photoshop

The earth has changed. It has grown and died many times. Yet, it's peaceful. I walk through the streets I once remembered as Burwood. The only feature still standing is the memorial arch, seeping out generations of memories, their faint whispers like a hug to the soul. While I travelled so far to get home, I was suddenly no longer preoccupied with the past and what once stood. I truly opened my eyes and saw Burwood for what it really was - beautiful. I let my body fall and the memories of Burwood past, present and future welcome me back home.



NAOMI JUSTIN

A Lost Dream
Digital-Still Artwork - Digital Painting using iPad Pro and Procreate

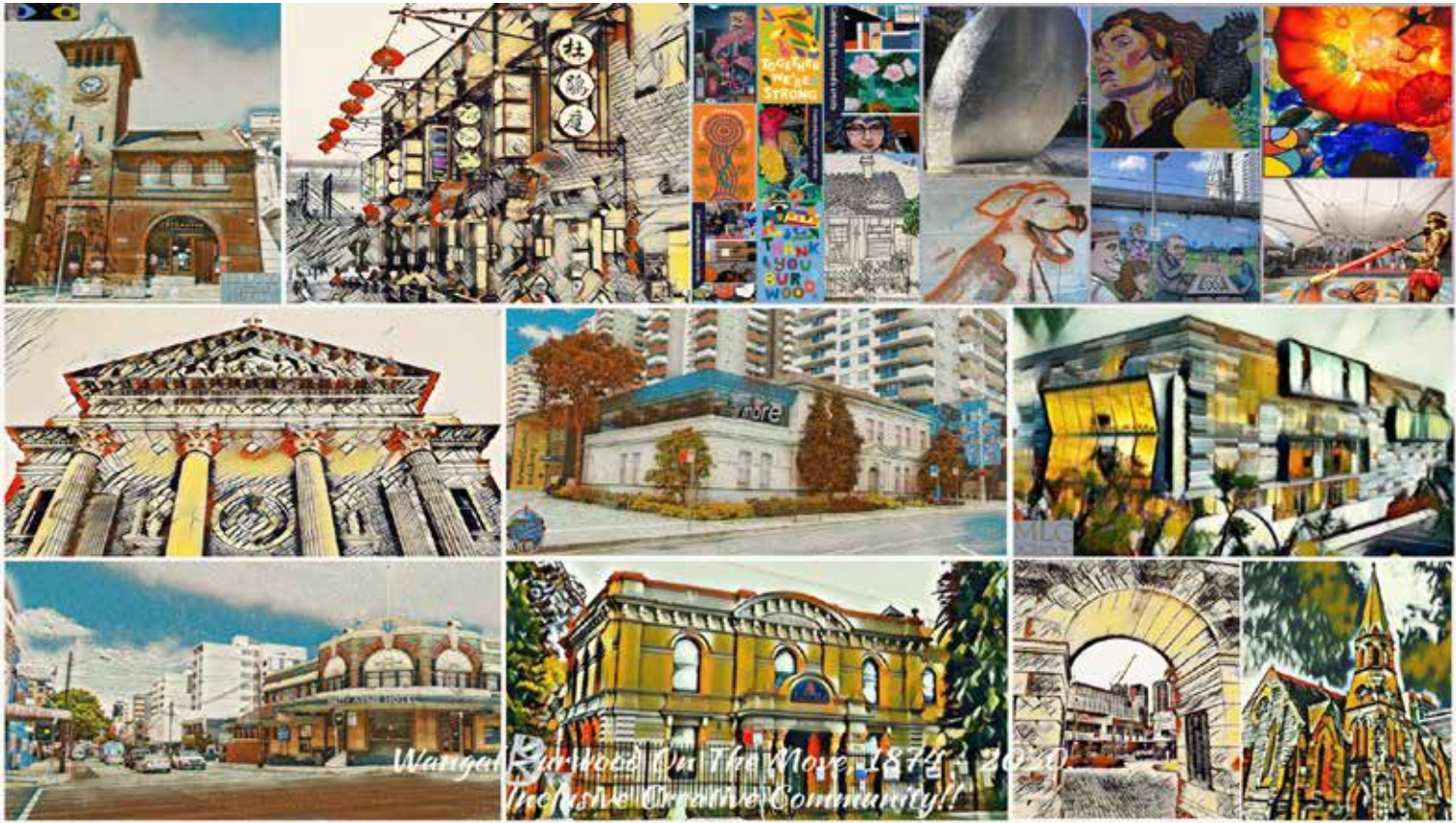
As life lingers in a monotonous traversal solitude, the more prolonged the time, the very notion of what "to live" is, becomes more distorted. In this piece, Burwood Arcade encapsulates the longing for connection and experience. The idea of what we used to have feels like a memory long ago, filled with vivid lights, colours and joy; an exhilarating dream.



LEON MULCAHY

The Ghosts of Past Present and Future
Digital-Still Artwork - Digital image manipulation using photoshop

The artwork has depicted how the people of Australia through history have needlessly died. The world wars, the pandemic and those struggles are yet to come. This fits the theme of Burwood as we as a community remember these people (eg, the arch)



SURYA PRATAP KATARYA

The Great Barrier Reef
Digital-Still Artwork - Digital photographs with art effects - A Photo Artwork Collage

Through this collage I've tried to depict Burwood area's historical architectural artworks and landmarks since the municipality's inception in 1874, through to the significant changes to the landscape recently, and the council's determined support to arts and culture, as evident through various public art projects, and finally a vision of an 'Inclusive Creative Community' moving towards the milestone year of 2030! Acknowledging, the first indigenous people of the land, I've called it Wangal Burwood.



ANTON FELGUERAS

Victorian Era Burwood NSW
Digital-Still Artwork - created on Procreate

I have always been fascinated with the Victorian era, such as the elegant clothing style, architecture and lifestyle. I chose to depict Burwood with my take on how it may have looked within that period.

I have added shopfront windows, early architectural buildings (its structure and awnings can still be viewed on Burwood Road strip to this day), old Burwood post office, train line and local communal interactions. These elements forged the humble yet fundamental beginning that has made Burwood the community it is today.



RONG WEI

Burwood, Travel Metaverse
Digital-Still Artwork - Completed with digital tools such as Adobe Illustrator and Procreate

Recently, the concept of NFTs artwork and metaverse has soared as Facebook CEO Mark Zuckerberg announced its investment and development in the metaverse. What are NFTs artwork and metaverse? NFTs artwork is one of the kind digital asset, which allows digital artists and artwork buyers to secure ownership of the work. Many technology companies believe that in the near future they would be able to create a new parallel digital world through virtual reality, the metaverse. I envision metaverse will be commonplace in the future, time travel will be achievable by metaverse.

The concept of time is vague in my work; the past, the present, and the future of Burwood will be connected through the digital world. The nostalgic tree in front of the old library from my childhood memory, the Burwood Chinatown we now have, the Burwood metaverse where colleagues, friends, and families can gather virtually even if there is lockdown again in the future. There are many veiled elements in my drawing, are waiting for you to discover.



ANNA-MEI TAPIA

China Town Blossoming
Digital-Still Artwork - Digital Artwork

Chinese heritage residents make up 45% of Burwood. Their influence and culture reflects greatly in China Town Burwood, which is a hub of exciting things to experience. Memories with my daughters include trying tantalising dishes, playing fun arcade games and deciding on variations of desserts and bubble teas. It is a place of friendship, romance and growth. It continues to evolve and bring together all generations and communities through food, music and culture. When I mention Burwood to my daughters, they choose to visit China Town and make a list of all the things they want to do there. It is so lively and connects generations through multi sensory activities from the photo area in the indoor seating space to the welcoming outside area with its art creations and famous neon heart sign. The colours of these emotions come together in my abstract artwork to evoke passion, excitement and energy!



THOMAS FELGUERAS

Future Festival
Digital-Still Artwork - painted in Adobe Photoshop

I chose to depict Burwood in the buzzing time of 2150. I imagine the future of Burwood will further strengthen the union of community and culture. In honouring the Anzacs, I maintained the core aesthetics and historical essence of Burwood Park, including the iconic Burwood War Memorial Arch, 'The Bugler from Burwood' and palm trees planted in the 1920s.

Inspired by Retrofuturism, I endeavoured to add many quirky elements from UFO-like high rise buildings, floating cities, a high-tech Sydney overhead train tunnel tube and more. I encourage the viewer to explore the work and discover further.

Dedicated to Anton Felgueras.



VANESSA STEFANOVA

Gold Doughnuts
Digital-Still artwork - Computers and a camera

I created a render of gold doughnuts and edited them into a bunch of photo's I've taken then overlaid some artificial clouds.

The result - doughnuts falling from the sky is a metaphor for the endless luxuries of junk food the 21st century has.



MARCIA KELLY

The Priory and COP26
Digital-Still Artwork - Digital editing app

The Priory built-in 1877 is a Heritage Listed building. In regards to climate change, the challenge we all have is not just to maintain Heritage Listed buildings but our home under the blue sky.

The Glasgow Climate Conference now is to protect Intangible goods such as nature together with Buildings on the list of world heritage must be what we inherit to future generations and so they can also enjoy it.



NEW AND EMERGING ARTIST 2022 WINNER

STACEY FREDERICKS

Woodside Avenue

Painting – Acrylic on Canvas